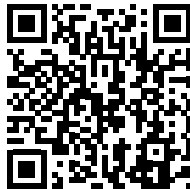
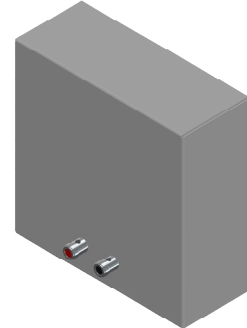




CORO™ COLLECTION



**SCAN OR CLICK TO EXTEND
YOUR GARVAN WARRANTY FOR FREE!**

3 years included, with the option to add
2 extra years at no additional cost.

OVERVIEW DESCRIPTION – UNIQUE DESCRIPTION PRODUCT

The Garvan KB112 is a compact and elegant bookshelf loudspeaker, designed to deliver premium acoustic performance in indoor environments. Crafted in Italy with a lacquered metal cabinet and customizable front grille, it combines refined design with professional sound quality. The coaxial configuration (130 mm woofer + 14 mm tweeter) ensures wide coverage and a balanced frequency response, making it ideal for music, voice reproduction, and multimedia applications. Its versatility makes it suitable for both residential installations and professional spaces such as hotels, offices, or retail environments.

KEY FEATURES

Installation type: bookshelf and desktop loudspeaker

Drivers: coaxial system with 130 mm woofer and 14 mm tweeter

Power handling: 50 W AES / 100 W continuous

Sensitivity: 89 dB (2.83V/1m – 1W/1m)

Maximum SPL: 118 dB @ 1m

Frequency response: 95 Hz – 20 kHz (-3 dB)

Nominal impedance: 8 Ω

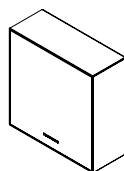
Coverage angle: 110° (1–4 kHz) / 90° (1–10 kHz)

Cabinet: lacquered metal, galvanic or satin-finish steel options

Grille: lacquered metal, brushed stainless steel or fabric-covered frame

Application: designed for indoor use, suitable for residential and commercial spaces

Warranty: 3 years + 2 years free extension (upon registration)



NAME INSTALLATION	Bookshelf
Type Installation	bookshelf and desk speaker
Surface Compatibility	Suitable for installation in, concrete wall, Plasterboard, wooden panels, modular panel, and similar.
Installation Requirements:	Support thickness suitable for product weight
SINGLE LOUDSPEAKER PERFORMANCE	
AES Power Handling	50 W
Continuous Power Handling ***	100 W
Sensitivity 2,83V / 1m ****	89 dB
Sensitivity 1W/1m ****	89 dB
Calculated Maximum SPL @ 1m*	118 dB
TRANSDUCER	
Type	Coaxial
Nominal size	WF 130 mm + TW 14mm
Nominal Impedance	8Ω
Loudspeaker EQ	Not required, Garvan Preset EQ, Filter and protection available
Recommended High-Pass Filter Protection	65 Hz with 48 dB/Oct. High pass Filter
Frequency Response (-3 dB)	95 Hz – 20 kHz **
Frequency Range (-10 dB)	60 Hz - 20 kHz **
Nominal Coverage Angle (1 KHz - 4 kHz)	110°
Nominal Coverage (1 KHz – 10 kHz)	90°
PHYSICAL	
Frame Material	lacquered metal cabinet, galvanic or satin-finish steel
Speaker support Material	Black laquered metal support
Cover	Laquered or galvanic metal Grille/ Brusced stainlenss steel Grille / Fabric covered frame.
ENVIRONMENTAL FEATURES	
Enviropment of Use	Indoor environments
Operating Temperature Range *****	
environmental protection.	
Connectors	Push connector, mounted on speaker. Accepts 18 AWG (0.8 mm2) to 15 AWG (2,08 mmq) size wire.
Maximum Ceiling Thickness	
Product Dimensions	
Ceiling Cutout	
Net Weight, Frame	
Net Weight, Loudspeaker	
Net Weight, Cover	

LOGISTICAL DATA			
Packaging dimensions			
Shipping Weight			
Quantity of products per package		1 to 2 based on logistics optimization per shipment	
MAINTENANCE			
Cleaning Method		microfiber cloth	
General precautions		do not use harsh cleaning products	
INCLUDED ACCESSORIES			
OPTIONAL ACCESSORIES			
Transformer for hight line voltage		TRT052 – 70/100V - 25/37/50W	
Transformer for hight line voltage		TRT054 – 70/100V - 10/15/20W	
Cover installation kit		GAR136	
Cable size/load	8 ohm	4 ohm	2 ohm
2 sq mm.	20m / 65ft.	10m / 32ft	5m / 16ft
2,5 sq mm.	30m / 100ft.	15m / 50ft	7,5m / 25ft
4 sq mm.	60m / 200ft.	30m / 100ft	15m / 50ft
NOTES:			

* Maximum SPL calculated from sensitivity and power handling specifications, using a signal with crest factor 4 (12dB), exclusive of power compression.

** With dedicated preset

*** Power on Continuous Program is defined as 3 dB greater than the Nominal rating.

**** average SPL measured from 200 Hz to 1,5 kHz

***** With dedicated ignition and maintenance process

BOOKSHELF CODES

1 Loudspeaker **KB112**
2 Front cover **11BXX**

AES POWER **50 W**
TYPE **COAXIAL**
NOM. SIZE **WF 130 mm + TW 14 mm**
NOM. IMP. **8Ω**

