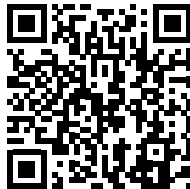
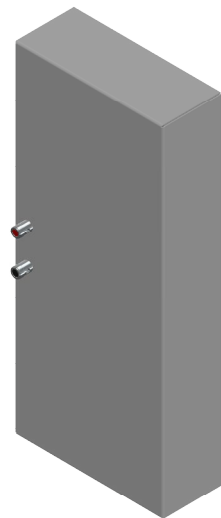
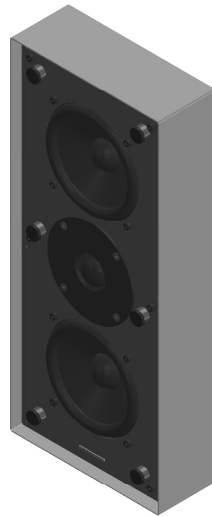




### CORO™ COLLECTION



**SCAN OR CLICK TO EXTEND  
YOUR GARVAN WARRANTY FOR FREE!**

3 years included, with the option to add  
2 extra years at no additional cost.

## OVERVIEW DESCRIPTION – UNIQUE DESCRIPTION PRODUCT

The Garvan KB313 is a premium 2-way bookshelf loudspeaker from the Coro™ Collection, entirely Made in Italy and designed to combine acoustic excellence with refined aesthetics. Built with a lacquered or galvanic metal cabinet and finished with elegant grille options in metal or fabric, the KB313 seamlessly integrates into residential and professional environments. Engineered for powerful yet balanced performance, it delivers a wide frequency response and high sensitivity without requiring additional equalization. Its versatile design allows placement on bookshelves, desks, or mounted on different surfaces, ensuring both sonic clarity and architectural harmony in any interior.

## KEY FEATURES

2-way loudspeaker with dual 130 mm woofers and 25 mm tweeter

Power handling: 160 W AES / 320 W continuous

High sensitivity: 93 dB (2.83V/1m) for dynamic, detailed sound

Frequency response: 65 Hz – 20 kHz (–3 dB) with preset EQ

Wide coverage: >120° dispersion for uniform sound distribution

Robust construction: lacquered or satin-finish metal cabinet with optional fabric or stainless steel grille

Flexible installation: suitable for concrete walls, plasterboard, wooden or modular panels

Indoor use with environmental protection and durable push connectors (accepts 18–15 AWG wiring)

Dimensions: 193 × 443 × 93 mm – Weight: 4.82 kg

Warranty: 3+1+1 years with free extension option



NAME INSTALLATION	Bookshelf
Type Installation	bookshelf and desk speaker
Surface Compatibility	Suitable for installation in, concrete wall, Plasterboard, wooden panels, modular panel, and similar.
Installation Requirements:	Support thickness suitable for product weight
SINGLE LOUDSPEAKER PERFORMANCE	
AES Power Handling	160 W
Continuous Power Handling ***	320 W
Sensitivity 2,83V / 1m ****	93 dB
Sensitivity 1W/1m ****	90 dB
Calculated Maximum SPL @ 1m*	124 dB
TRANSDUCER	
Type	2 Way
Nominal size	2x WF 130 mm + TW 25mm
Nominal Impedance	4Ω
Loudspeaker EQ	Not required, Garvan Preset EQ, Filter and protection available
Recommended High-Pass Filter Protection	55 Hz with 48 dB/Oct. High pass Filter
Frequency Response (-3 dB)	65 Hz – 20 kHz **
Frequency Range (-10 dB)	57 Hz - 20 kHz **
Nominal Coverage Angle (1 KHz - 4 kHz)	> 120°
Nominal Coverage (1 KHz – 10 kHz)	120
PHYSICAL	
Frame Material	lacquered metal cabinet, galvanic or satin-finish steel
Speaker support Material	Black laquered metal support
Cover	Laquered or galvanic metal Grille/ Brusced stainlenss steel Grille / Fabric covered frame.
ENVIRONMENTAL FEATURES	
Enviropment of Use	Indoor environments
Operating Temperature Range *****	
environmental protection.	
Connectors	Push connector, mounted on speaker. Accepts 18 AWG (0.8 mm2) to 15 AWG (2,08 mmq ) size wire.
Maximum Ceiling Thickness	
Product Dimensions	
Ceiling Cutout	
Net Weight, Frame	
Net Weight, Loudspeaker	
Net Weight, Cover	

LOGISTICAL DATA			
Packaging dimensions			
Shipping Weight			
Quantity of products per package		1 to 2 based on logistics optimization per shipment	
MAINTENANCE			
Cleaning Method		microfiber cloth	
General precautions		do not use harsh cleaning products	
INCLUDED ACCESSORIES			
OPTIONAL ACCESSORIES			
Transformer for hight line voltage		TRT052 – 70/100V - 25/37/50W	
Transformer for hight line voltage		TRT054 – 70/100V - 10/15/20W	
Cover installation kit		GAR136	
Cable size/load	8 ohm	4 ohm	2 ohm
2 sq mm.	20m / 65ft.	10m / 32ft	5m / 16ft
2,5 sq mm.	30m / 100ft.	15m / 50ft	7,5m / 25ft
4 sq mm.	60m / 200ft.	30m / 100ft	15m / 50ft
NOTES:			

\* Maximum SPL calculated from sensitivity and power handling specifications, using a signal with crest factor 4 (12dB), exclusive of power compression.

\*\* With dedicated preset

\*\*\* Power on Continuous Program is defined as 3 dB greater than the Nominal rating.

\*\*\*\* average SPL measured from 200 Hz to 1,5 kHz

\*\*\*\*\* With dedicated ignition and maintenance process

### BOOKSHELF CODES

1 Loudspeaker **KB313**  
2 Front cover **41BXX**

AES POWER **160 W**  
TYPE **2 WAY**  
NOM. SIZE **2X WF 130 mm + TW 25 mm**  
NOM. IMP. **4Ω**

