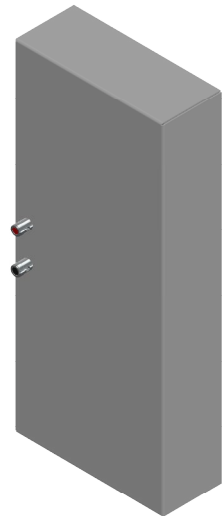




CORO™ COLLECTION



**SCAN OR CLICK TO EXTEND
YOUR GARVAN WARRANTY FOR FREE!**

3 years included, with the option to add
2 extra years at no additional cost.

OVERVIEW DESCRIPTION – UNIQUE DESCRIPTION PRODUCT

The Garvan KB316 is a high-performance 2-way bookshelf loudspeaker from the Coro™ Collection, crafted in Italy to deliver both acoustic precision and architectural elegance. Designed for versatile installation on bookshelves, desks, or integrated into various surfaces, it combines powerful dynamics with a refined design. Its lacquered or galvanic metal cabinet and premium grille options ensure durability and style, while its wide frequency response and high sensitivity make it ideal for both residential and professional environments where clarity, balance, and design integration are essential.

KEY FEATURES

2-way configuration with dual 130 mm woofers and 25 mm tweeter

Power handling: 160 W AES / 320 W continuous

High sensitivity: 93 dB (2.83V/1m) ensuring dynamic sound reproduction

Frequency response: 65 Hz – 20 kHz (–3 dB) with preset EQ

Wide dispersion: >120° coverage for even sound distribution

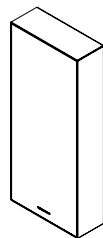
Cabinet construction: lacquered or satin-finish metal with optional fabric or stainless steel grille

Flexible installation: suitable for concrete walls, plasterboard, wood panels, and modular structures

Indoor application with robust push connectors (accepts 18–15 AWG cable sizes)

Product dimensions: 193 × 443 × 93 mm – Net weight: 4.82 kg

Warranty: 3+1+1 years with free extension option



NAME INSTALLATION	Bookshelf
Type Installation	bookshelf and desk speaker
Surface Compatibility	Suitable for installation in, concrete wall, Plasterboard, wooden panels, modular panel, and similar.
Installation Requirements:	Support thickness suitable for product weight
SINGLE LOUDSPEAKER PERFORMANCE	
AES Power Handling	80 W
Continuous Power Handling ***	160 W
Sensitivity 2,83V / 1m ****	87,5 dB
Sensitivity 1W/1m ****	87,5 dB
Calculated Maximum SPL @ 1m*	118,5 dB
TRANSDUCER	
Type	2 Way
Nominal size	WF 130 mm + TW 25mm + RP 160mm
Nominal Impedance	8Ω
Loudspeaker EQ	Not required, Garvan Preset EQ, Filter and protection available
Recommended High-Pass Filter Protection	40 Hz with 48 dB/Oct. Hight pass Filter
Frequency Response (-3 dB)	60 Hz – 20 kHz **
Frequency Range (-10 dB)	48 Hz - 20 kHz **
Nominal Coverage Angle (1 KHz - 4 kHz)	> 120°
Nominal Coverage (1 KHz – 10 kHz)	120
PHYSICAL	
Frame Material	lacquered metal cabinet, galvanic or satin-finish steel
Speaker support Material	Black laquared metal support
Cover	Laquared or galvanic metal Grille/ Brusced stainlenss steel Grille / Fabric covered frame.
ENVIRONMENTAL FEATURES	
Enviropment of Use	Indoor environments
Operating Temperature Range *****	
environmental protection.	
Connectors	Push connector, mounted on speaker. Accepts 18 AWG (0.8 mm2) to 15 AWG (2,08 mmq) size wire.
Maximum Ceiling Thickness	
Product Dimensions	
Ceiling Cutout	
Net Weight, Frame	
Net Weight, Loudspeaker	
Net Weight, Cover	

LOGISTICAL DATA			
Packaging dimensions			
Shipping Weight			
Quantity of products per package		1 to 2 based on logistics optimization per shipment	
MAINTENANCE			
Cleaning Method		microfiber cloth	
General precautions		do not use harsh cleaning products	
INCLUDED ACCESSORIES			
OPTIONAL ACCESSORIES			
Transformer for hight line voltage		TRT052 – 70/100V - 25/37/50W	
Transformer for hight line voltage		TRT054 – 70/100V - 10/15/20W	
Cover installation kit		GAR136	
Cable size/load	8 ohm	4 ohm	2 ohm
2 sq mm.	20m / 65ft.	10m / 32ft	5m / 16ft
2,5 sq mm.	30m / 100ft.	15m / 50ft	7,5m / 25ft
4 sq mm.	60m / 200ft.	30m / 100ft	15m / 50ft
NOTES:			

* Maximum SPL calculated from sensitivity and power handling specifications, using a signal with crest factor 4 (12dB), exclusive of power compression.

** With dedicated preset

*** Power on Continuous Program is defined as 3 dB greater than the Nominal rating.

**** average SPL measured from 200 Hz to 1,5 kHz

***** With dedicated ignition and maintenance process

BOOKSHELF CODES

1 Loudspeaker **KB316**
2 Front cover **41BXX**

AES POWER **80 W**
TYPE **2 WAY**
NOM. SIZE **WF 130 mm + TW 25 mm + RP 160 mm**
NOM. IMP. **8Ω**

