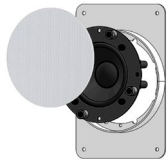
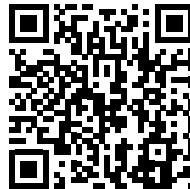
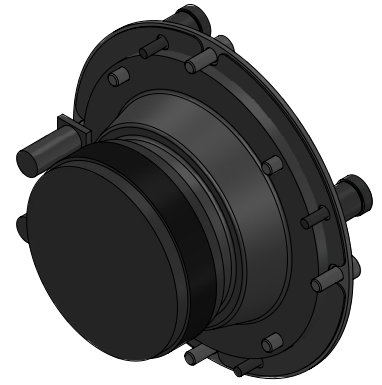
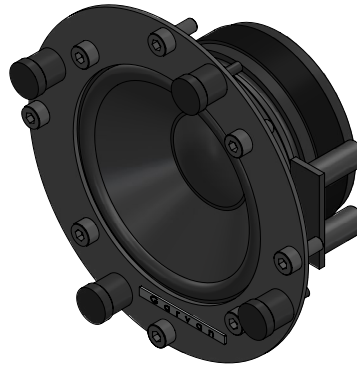




### Plasterboard



### Easy-Fit



### SCAN OR CLICK TO EXTEND YOUR GARVAN WARRANTY FOR FREE!

3 years included, with the option to add  
2 extra years at no additional cost.

## OVERVIEW DESCRIPTION – UNIQUE DESCRIPTION PRODUCT

3" (76 mm) extended-range in-wall and in-ceiling speaker, 80 W, delivering up to 111.5 dB SPL at 1 meter. Features a steel body and frame, with a treated cellulose cone and rubber surround for balanced sound and excellent vocal clarity. Connections are made via spring-loaded terminals supporting AWG14 cables.

### Installation Options:

FiloMuro™ Plasterboard: flush-mount system for seamless wall integration.

FiloMuro™ Masonry: flush-mount with steel frame and phenolic marine plywood formwork for masonry walls.

EasyFit™: front-mount, tool-free system compatible with panels from 4 to 40 mm thick.

Customizable Design: Interchangeable grille fixed with neodymium magnets, customizable in perforated steel (paintable or galvanic finish), graphic prints, or acoustic fabric. Visually adapts to any environment, from invisible to decorative, while maintaining top-level sound performance.

## KEY FEATURES

### 3" (76 mm) Full-Range Driver

Compact speaker with treated cellulose cone and rubber surround for uniform sound distribution and excellent vocal clarity.

### High SPL in a Small Size

Delivers up to 111.5 dB SPL at 1 meter with 80W maximum power handling.

### Wide Frequency Response

88 Hz – 20 kHz (-10 dB), 115 Hz – 16 kHz (-3 dB), for full-bodied, natural sound.

### Versatile Installation Options

Supports FiloMuro™ for plasterboard and masonry, and EasyFit™ for quick installation on panels from 4 to 40 mm.

### Disappearing Design

Flush-mount installation allows the speaker to become invisible when painted the same color as the wall.

### Customizable Aesthetic Cover

Perforated steel grille, galvanic treatments, graphic prints, or fabric in multiple colors from Garvan's collections.

### Quick Connection System

Spring terminals compatible with cables up to AWG14 for easy and fast installation.

### Multi-Surface Compatibility

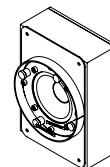
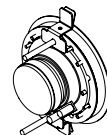
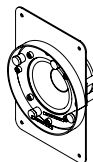
Installs in plasterboard, wood, metal, porcelain tiles, and concrete walls.

### Elegant Finishes

Visible frame available in brushed stainless steel, painted, or galvanic finishes to match interior design.

### Extended Warranty

3+1+1 years warranty included, extendable at no extra cost.



NAME INSTALLATION	Flush-Mount™ Plasterboard	Easy-Fit™	Flush-Mount™ Concrete wall
Type Installation	In Wall / In Ceiling Speaker, free air	In Wall / In Ceiling Speaker, free air	In Wall / In Ceiling Speaker, Closed box
Surface Compatibility	Suitable for installation in Plasterboard, wooden panels, modular panel, and similar.	Suitable for installation in Plasterboard, wooden panels, modular panel, and similar.	Suitable for installation in Concrete Wall and similar.
Installation Requirements:	Required support thickness: 12,5- 25mm	Required support thickness: 4-40mm	Minimum required wall thickness: 90mm
SINGLE LOUDSPEAKER PERFORMANCE			
AES Power Handling	40 W	40 W	40 W
Continuous Power Handling ***	80 W	80 W	80 W
Sensitivity 2,83V / 1m ****	83,5 dB	83,5 dB	83,5 dB
Sensitivity 1W/1m ****	83,5 dB	83,5 dB	83,5 dB
Calculated Maximum SPL @ 1m*	111,5 dB	111,5 dB	111,5 dB
TRANSDUCER			
Type	Full Range	Full Range	Full Range
Nominal size	1x 76mm	1x 76mm	1x 76mm
Nominal Impedance	8Ω	8Ω	8Ω
Loudspeaker EQ	Not required, Garvan Preset EQ, Filter and protection available	Not required, Garvan Preset EQ, Filter and protection available	Not required, Garvan Preset EQ, Filter and protection available
Recommended High-Pass Filter Protection	80 Hz with 48 dB/ Oct. Hight pass Filter	80 Hz with 48 dB/ Oct. Hight pass Filter	80 Hz with 48 dB/ Oct. Hight pass Filter
Frequency Response (-3 dB)	115 Hz - 16 kHz **	115 Hz - 16 kHz **	115 Hz - 16 kHz **
Frequency Range (-10 dB)	88 Hz - 20 kHz	88 Hz - 20 kHz	88 Hz - 20 kHz
Nominal Coverage Angle (1 KHz - 4 kHz)	> 120°	> 120°	> 120°
Nominal Coverage (1 KHz - 10 kHz)	90°	90°	90°
PHYSICAL			
Frame Material	zinc-plated metal	zinc-plated metal	zinc-plated metal
Speaker support Material	Laquered or galvanic metal support	Laquered or galvanic metal support	Laquered or galvanic metal support
Cover	Laquered or galvanic metal Grille/ Brushed stainless steel Grille / Fabric covered frame.	Laquered or galvanic metal Grille/ Brushed stainless steel Grille / Fabric covered frame.	Laquered or galvanic metal Grille/ Brushed stainless steel Grille / Fabric covered frame.

ENVIRONMENTAL FEATURES			
Environment of Use	Indoor environments	Indoor environments	Indoor environments
Operating Temperature Range *****			
environmental protection.			
Connectors	Push connector, mounted on speaker. Accepts 18 AWG (0.8 mm <sup>2</sup> ) to 15 AWG (2,08 mm <sup>2</sup> ) size wire.	Push connector, mounted on speaker. Accepts 18 AWG (0.8 mm <sup>2</sup> ) to 15 AWG (2,08 mm <sup>2</sup> ) size wire.	Push connector, mounted on speaker. Accepts 18 AWG (0.8 mm <sup>2</sup> ) to 15 AWG (2,08 mm <sup>2</sup> ) size wire.
Maximum Ceiling Thickness			
Product Dimensions			
Ceiling Cutout			
Net Weight, Frame			
Net Weight, Loudspeaker			
Net Weight, Cover			
LOGISTICAL DATA			
Packaging dimensions			
Shipping Weight			
Quantity of products per package	1 to 2 based on logistics optimization per shipment	1 to 2 based on logistics optimization per shipment	1 to 2 based on logistics optimization per shipment
MAINTENANCE			
Cleaning Method	microfiber cloth	microfiber cloth	microfiber cloth
General precautions	do not use harsh cleaning products	do not use harsh cleaning products	do not use harsh cleaning products
INCLUDED ACCESSORIES			
	Jig set	Jig set	Jig set
OPTIONAL ACCESSORIES			
Transformer for high line voltage	TRT052 – 70/100V - 25/37/50W	TRT052 – 70/100V - 25/37/50W	TRT052 – 70/100V - 25/37/50W
Transformer for high line voltage	TRT054 – 70/100V - 10/15/20W	TRT054 – 70/100V - 10/15/20W	TRT054 – 70/100V - 10/15/20W
Cover installation kit	GAR136	GAR136	GAR136
Sound-absorbing material kit for installation			
<b>Cable size/load</b>	<b>8 ohm</b>	<b>4 ohm</b>	<b>2 ohm</b>
2 sq mm.	20m / 65ft.	10m / 32ft	5m / 16ft
2,5 sq mm.	30m / 100ft.	15m / 50ft	7,5m / 25ft
4 sq mm.	60m / 200ft.	30m / 100ft	15m / 50ft
NOTES:			

\* Maximum SPL calculated from sensitivity and power handling specifications, using a signal with crest factor 4 (12dB), exclusive of power compression.

\*\* With dedicated preset

\*\*\* Power on Continuous Program is defined as 3 dB greater than the Nominal rating.

\*\*\*\* average SPL measured from 200 Hz to 1,5 kHz

\*\*\*\*\* With dedicated ignition and maintenance process

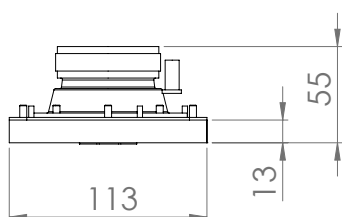
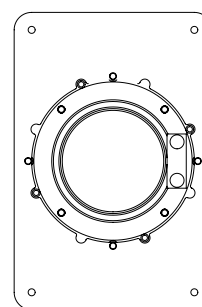
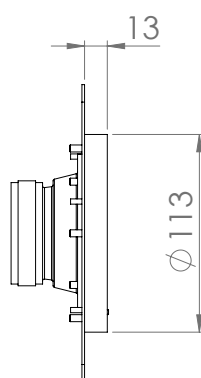
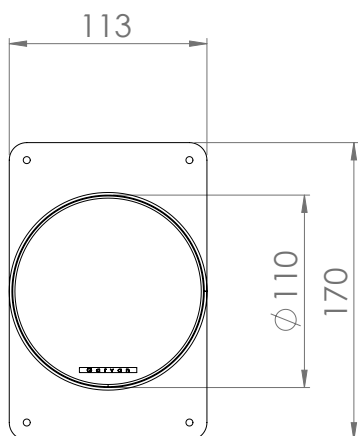
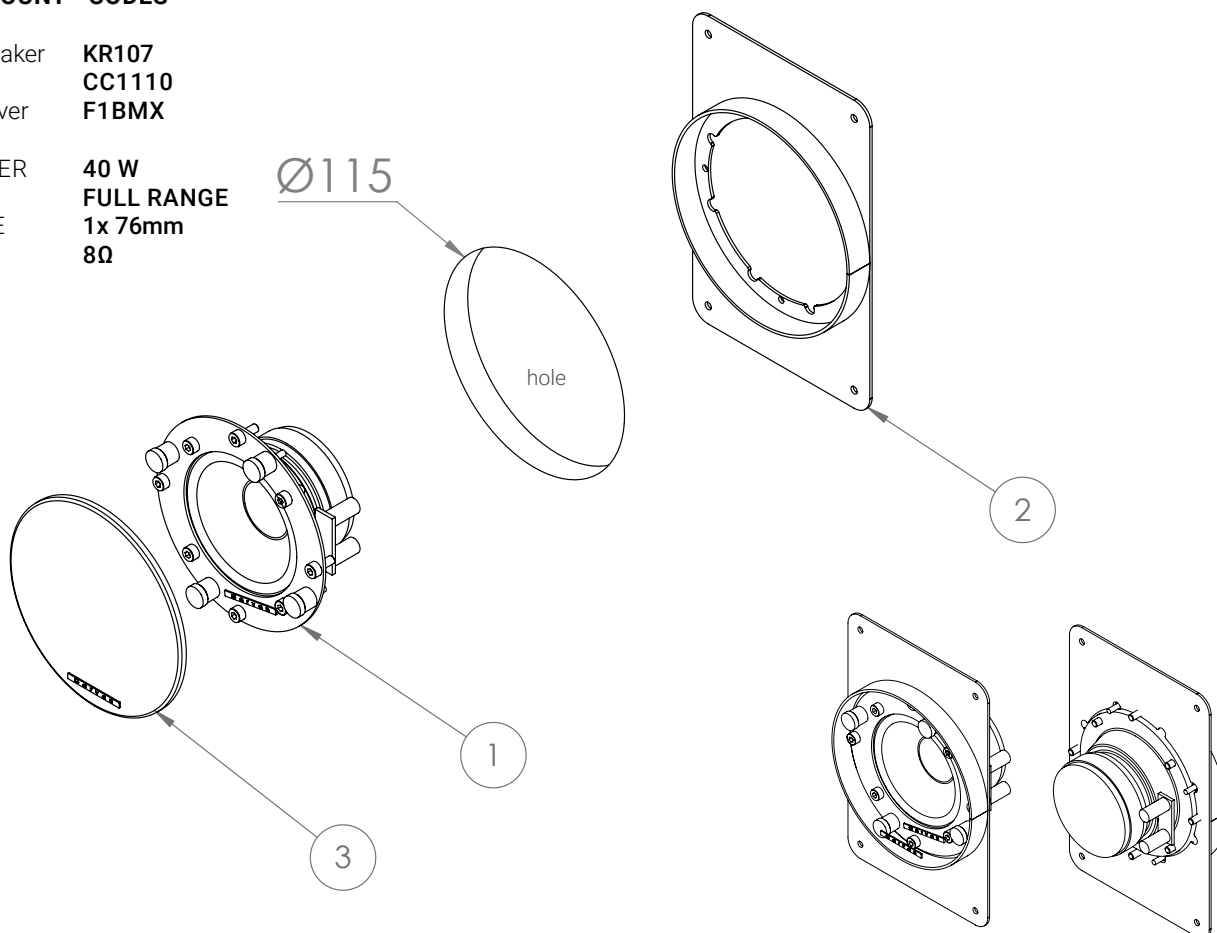
# KR107 / CC1110

## FLUSH-MOUNT™ PLASTERBOARD PRODUCT SHEET

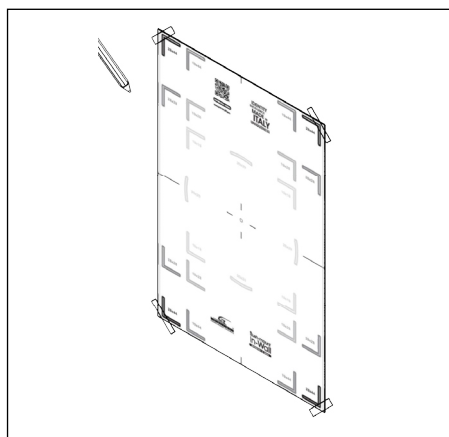
### FLUSH-MOUNT™ CODES

1 Loudspeaker **KR107**  
2 Frame **CC1110**  
3 Front cover **F1BMX**

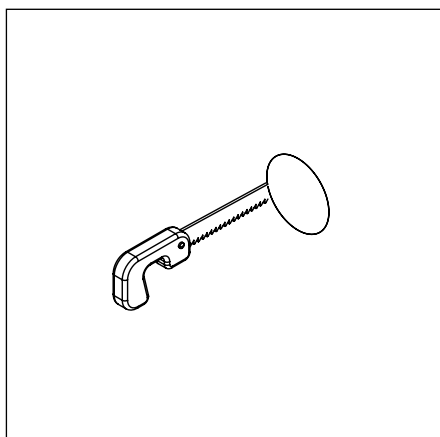
AES POWER **40 W**  
TYPE **FULL RANGE**  
NOM. SIZE **1x 76mm**  
NOM. IMP. **8Ω**



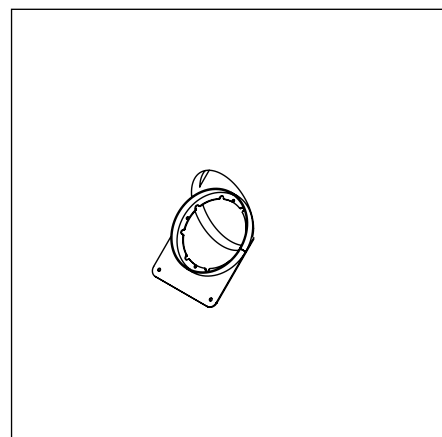
# INST. INSTRUCTIONS **KR107 / CC1110 Flush-Mount™ Plasterboard**



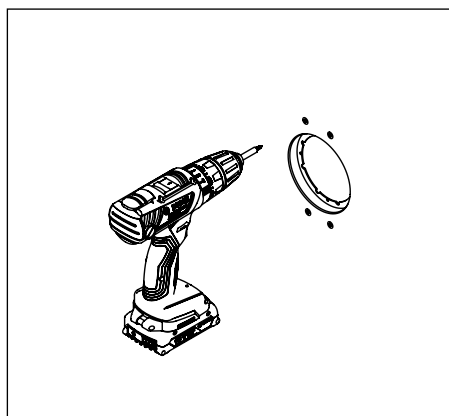
1 Jig set



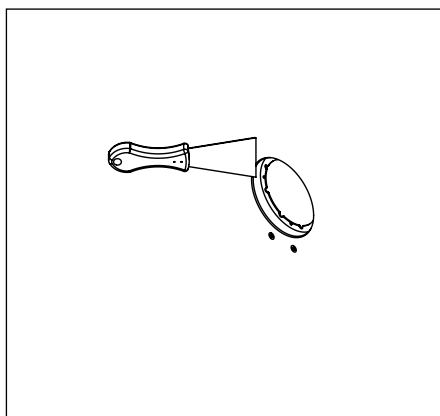
2



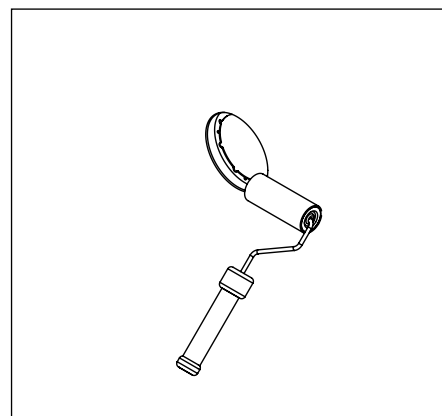
3



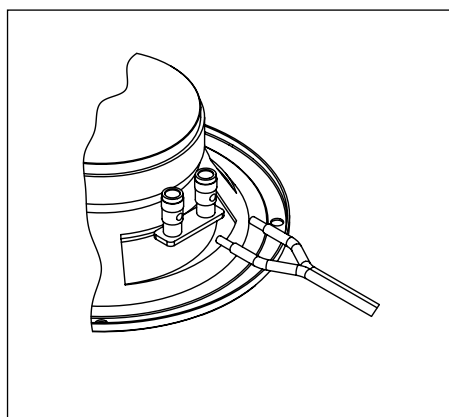
4



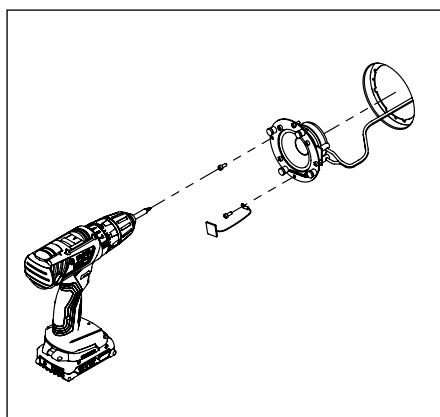
5



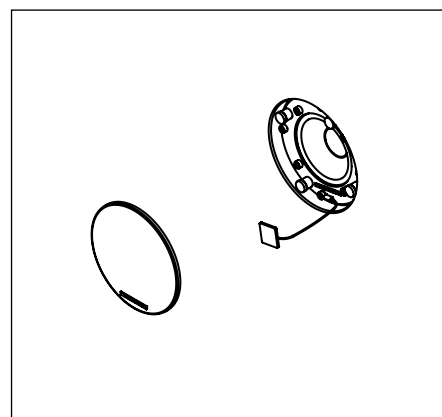
6



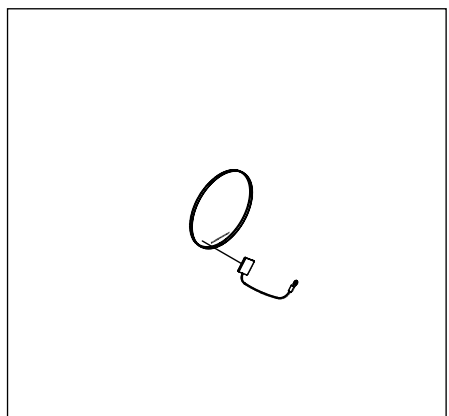
7



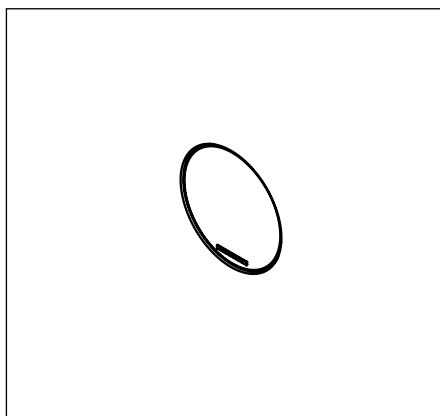
8



9



10



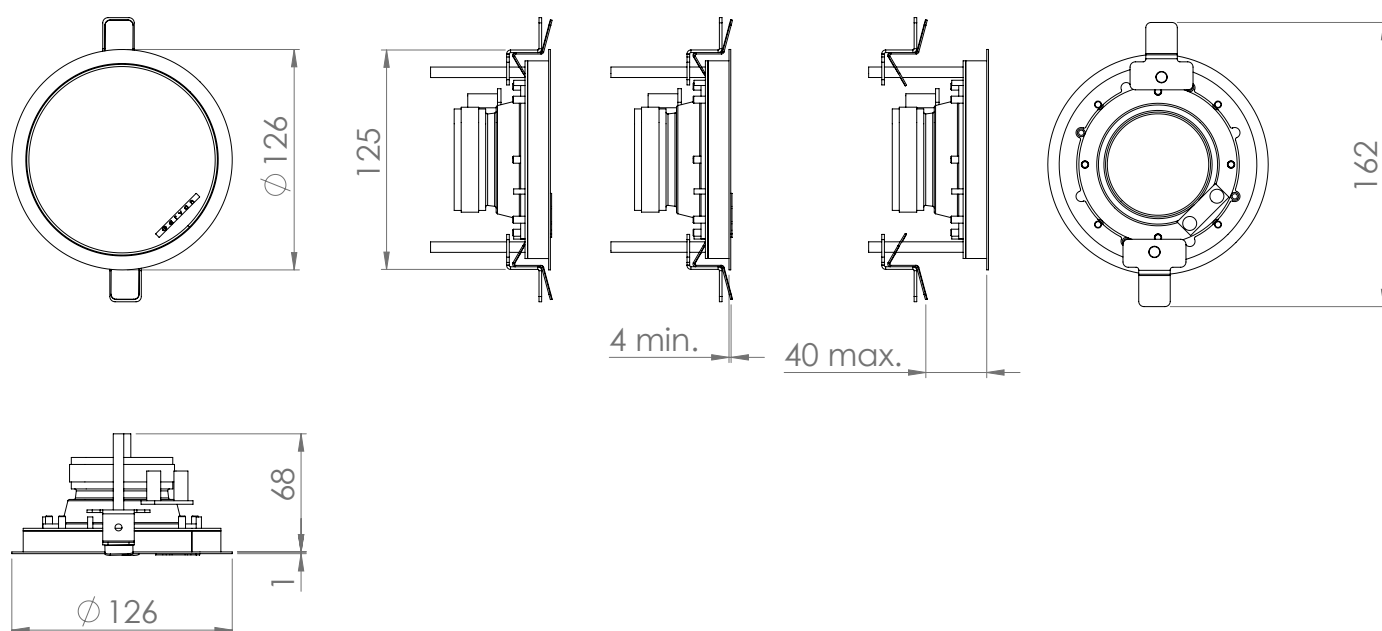
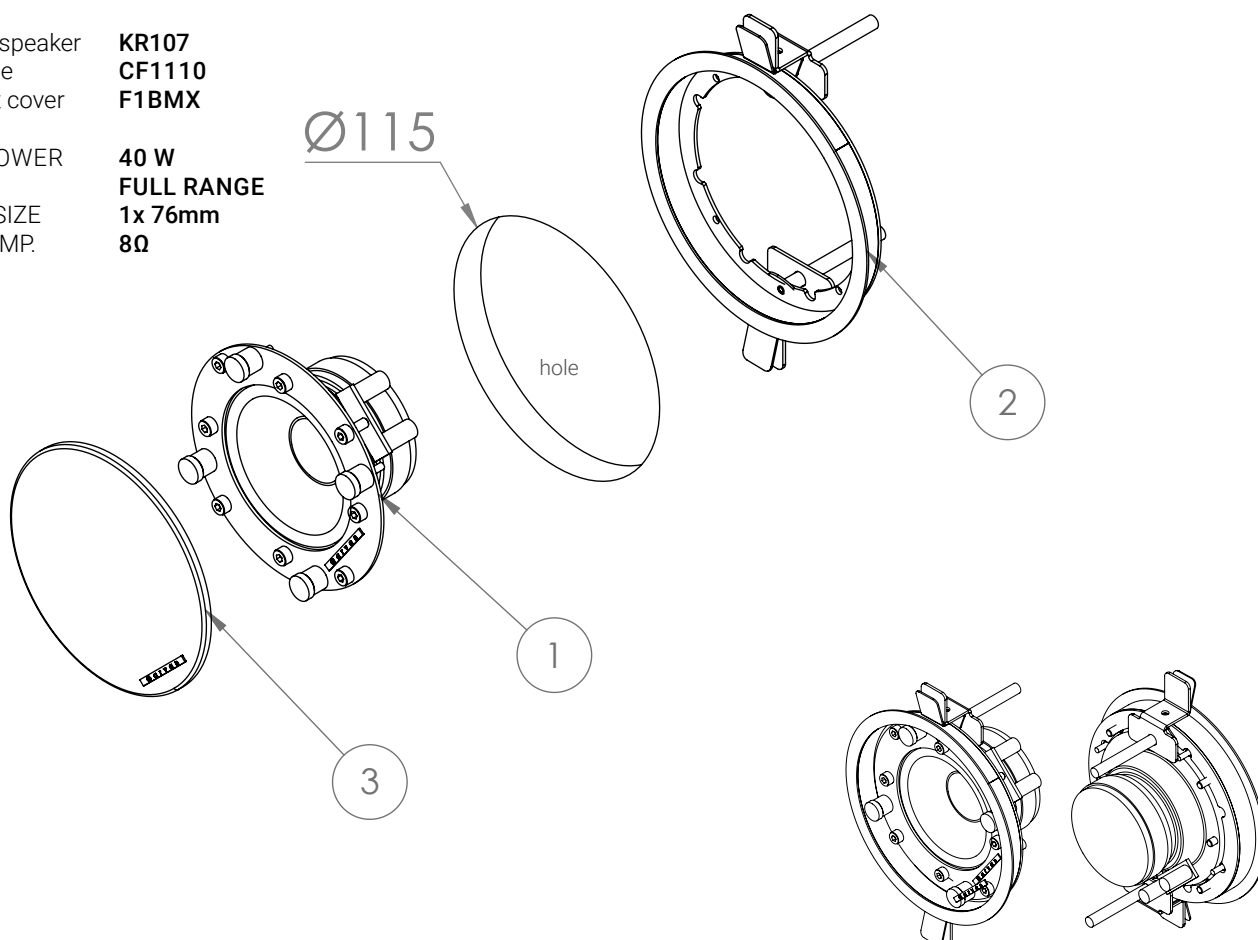
11



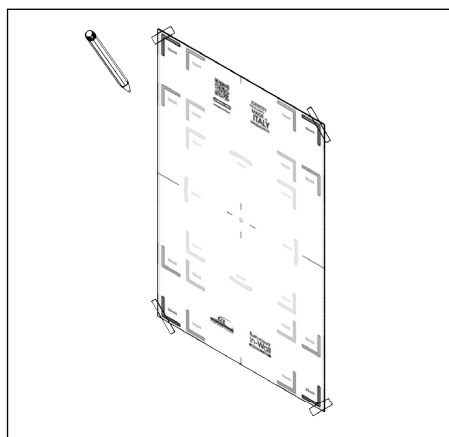
### EASY-FIT™ CODES

1 Loudspeaker **KR107**  
2 Frame **CF1110**  
3 Front cover **F1BMX**

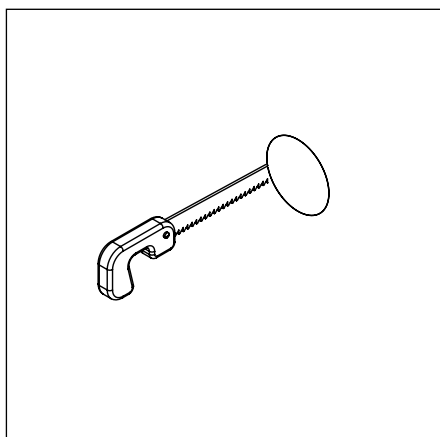
AES POWER **40 W**  
TYPE **FULL RANGE**  
NOM. SIZE **1x 76mm**  
NOM. IMP. **8Ω**



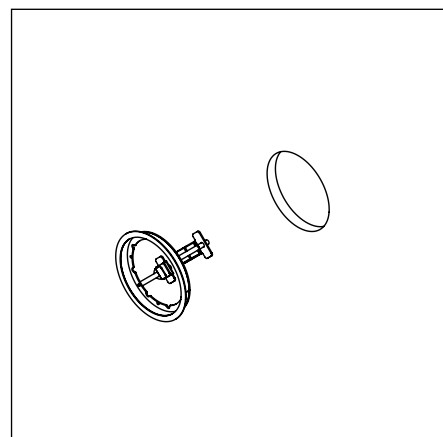
# INSTALLATION INSTRUCTIONS **KR107 / CF1110 Easy-Fit™**



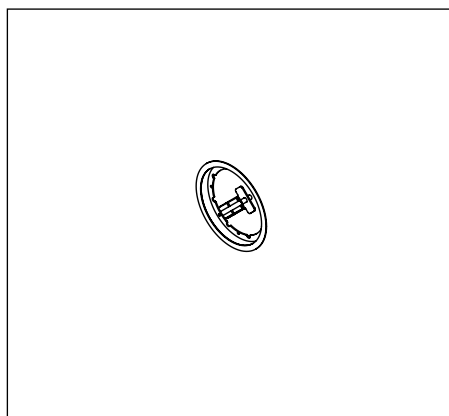
1 Jig set



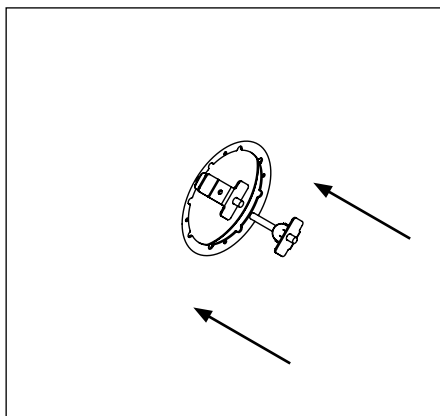
2



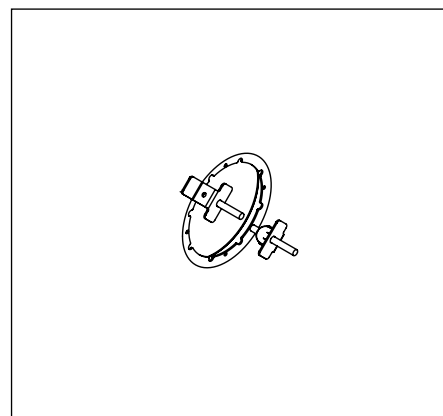
3



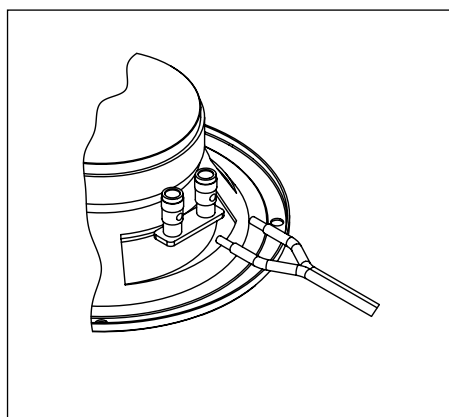
4



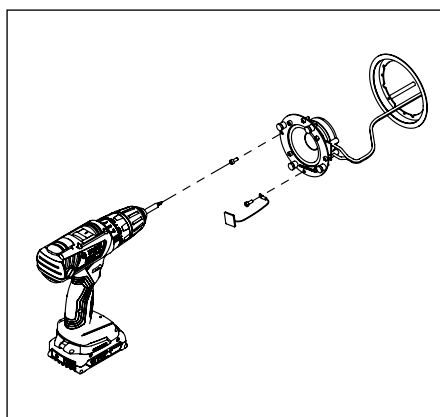
5



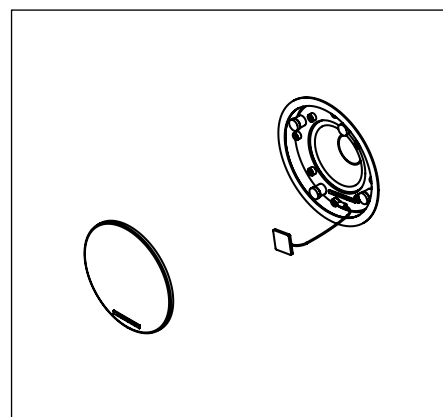
6



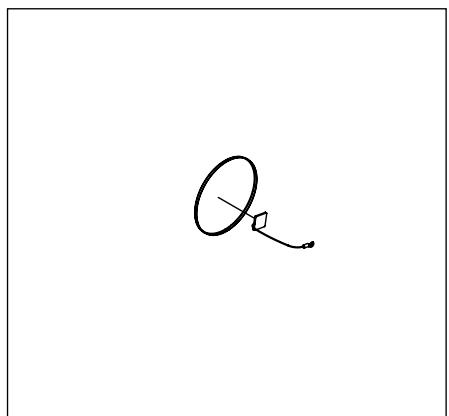
7



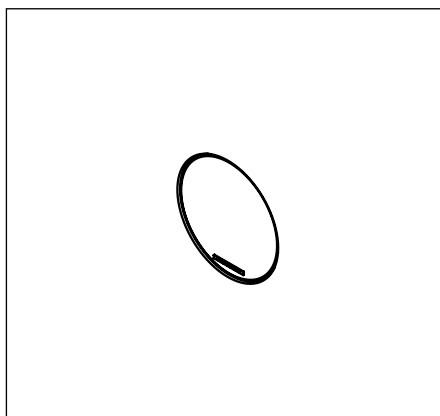
8



9



10



11



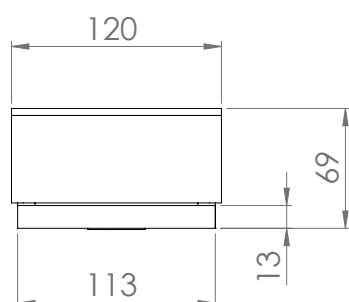
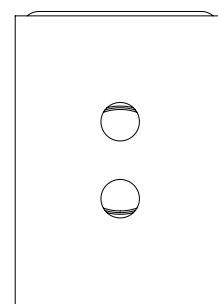
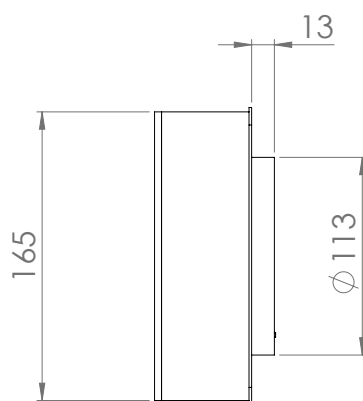
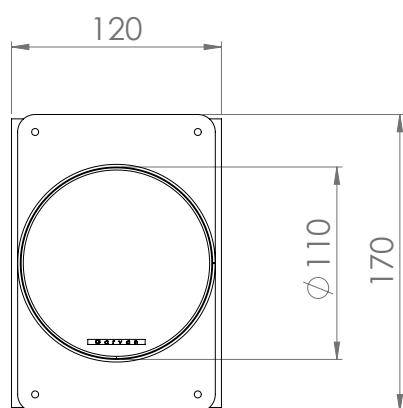
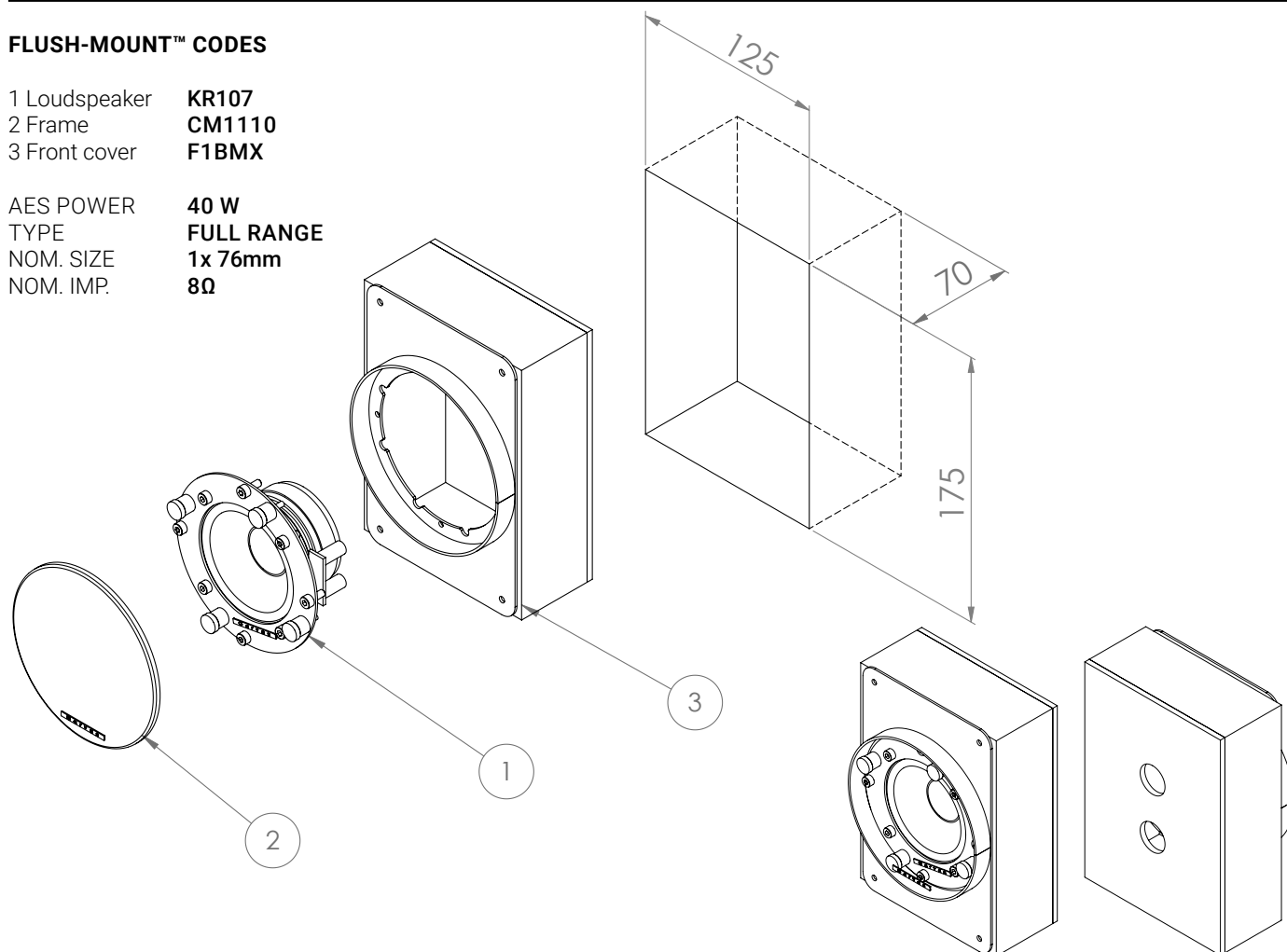
# KR107 / CM1110

## FLASH-MOUNT™ CONCRETE WALL PRODUCT SHEET

### FLASH-MOUNT™ CODES

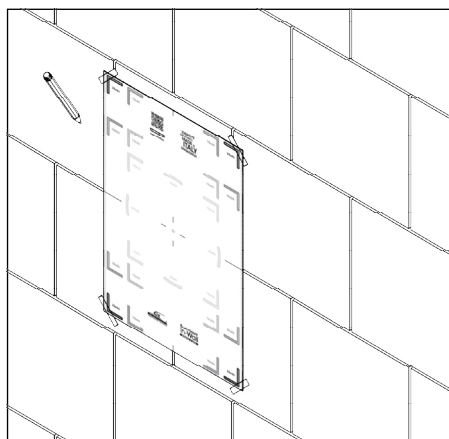
1 Loudspeaker **KR107**  
2 Frame **CM1110**  
3 Front cover **F1BMX**

AES POWER **40 W**  
TYPE **FULL RANGE**  
NOM. SIZE **1x 76mm**  
NOM. IMP. **8Ω**

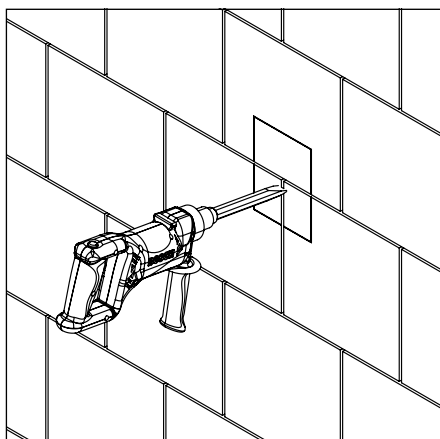




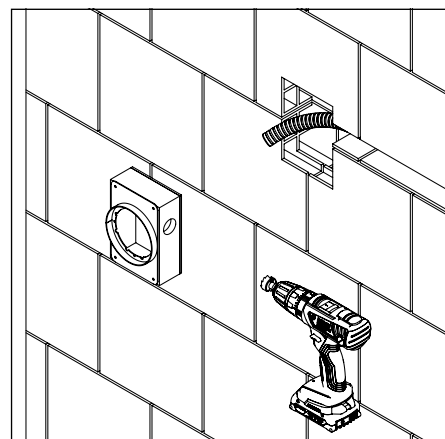
# INST. INSTRUCTIONS **KR107 / CM1110 FlushMount™** concrete wall



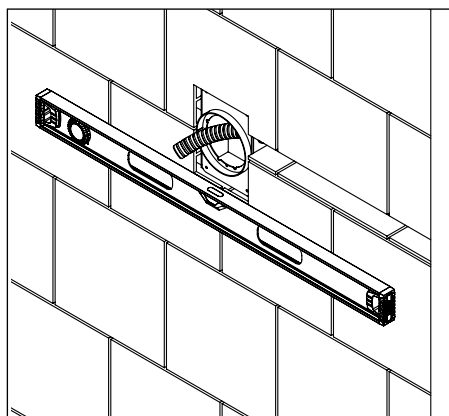
1



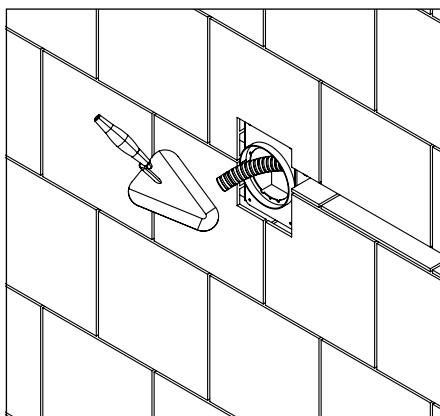
2



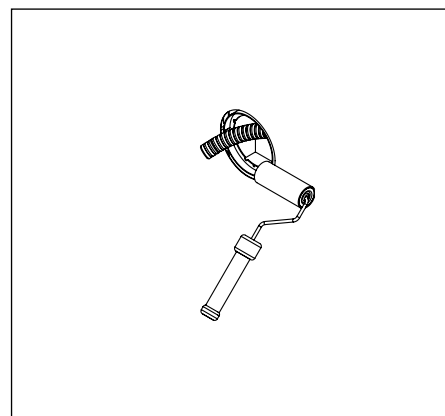
3



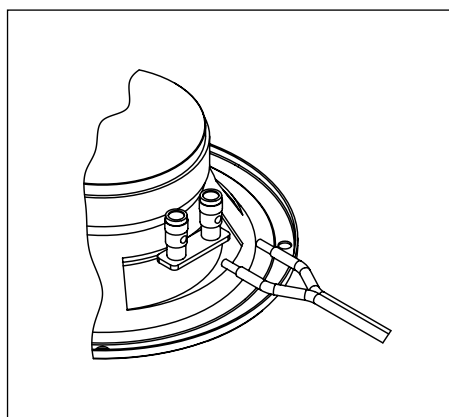
4



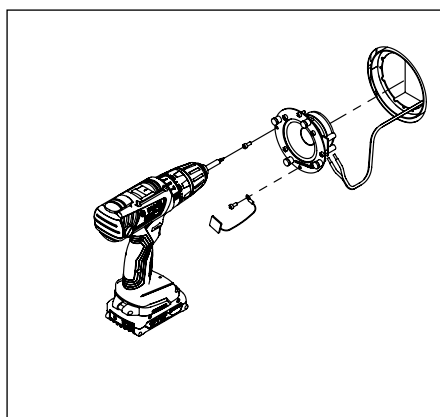
5



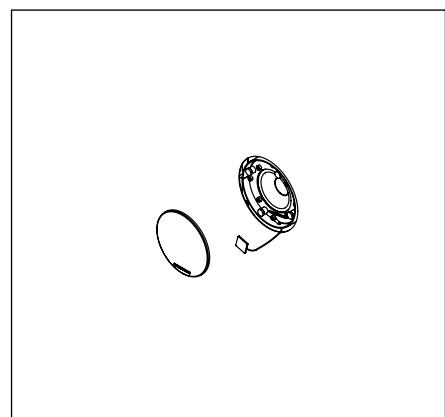
6



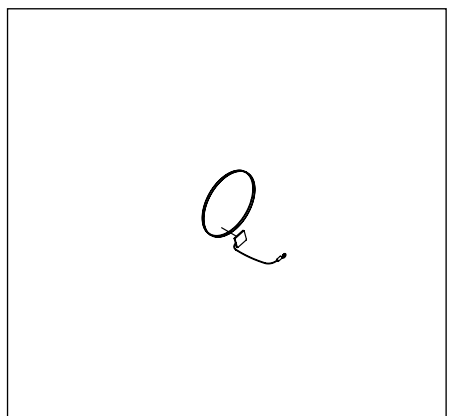
7



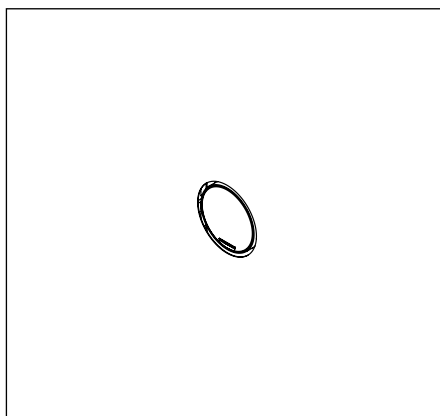
8



9



10



11

