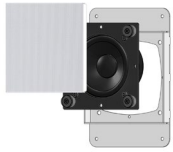
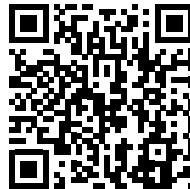
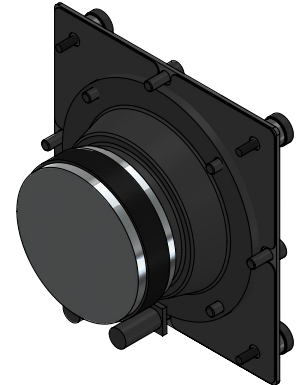
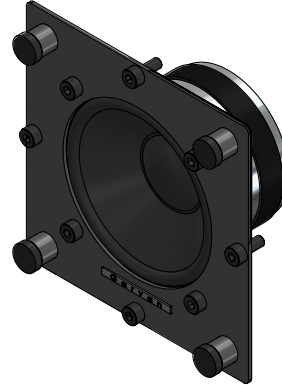




Plasterboard



Easy-Fit



**SCAN OR CLICK TO EXTEND  
YOUR GARVAN WARRANTY FOR FREE!**

3 years included, with the option to add  
2 extra years at no additional cost.

## OVERVIEW DESCRIPTION – UNIQUE DESCRIPTION PRODUCT

3" (76 mm) extended-range in-wall and in-ceiling speaker, 80W max, delivering up to 111.5 dB SPL at 1 meter. Built with a steel frame and treated cellulose cone with rubber surround for uniform sound distribution and excellent vocal intelligibility. Connection is via spring-loaded terminals, supporting cables up to AWG14. Installation Options: FiloMuro™ Plasterboard: flush-mount installation for drywall, completely disappearing when painted. FiloMuro™ Masonry: flush-mount for masonry walls with steel frame and phenolic plywood casing for perfect alignment with plastered surfaces. EasyFit™: tool-free front installation for panels in drywall, wood, metal, or porcelain tiles (4–40 mm thickness). Aesthetic Integration: The front cover is interchangeable and secured with neodymium magnets. It is customizable with perforated steel (paintable or galvanic finish), graphic prints, or acoustic fabric in various colors, allowing the speaker to blend invisibly into the interior or become a decorative element—always with impeccable sound quality.

## KEY FEATURES

3" Full-Range Driver for natural sound and clear vocals.

High SPL: Up to 111.5 dB at 1 meter, 80W max power.

Wide Frequency Range: 88 Hz – 20 kHz (-10 dB).

Flush-Mount Installation with FiloMuro™ system.

EasyFit™ Mounting for quick, tool-free installation.

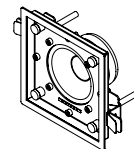
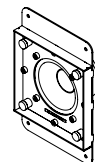
Customizable Grille: Steel, galvanic finish, or fabric.

Fast Connection: Spring terminals for AWG15 cables.

Wide Dispersion: 120° coverage (1–4 kHz).

Durable Build: Zinc-plated frame with refined finishes.

3+1+1 Year Warranty included, extendable free of charge.



INSTALLATION NAME	Flush-Mount™ Plasterboard	Easy-Fit™
Installation Type	In Wall / In Ceiling Speaker, free air	In Wall / In Ceiling Speaker, free air
Surface Compatibility	Suitable for installation in Plasterboard, wooden panels, modular panel, and similar.	Suitable for installation in Plasterboard, wooden panels, modular panel, and similar.
Installation Requirements	Required support thickness: 12,5- 25mm	Required support thickness: 4-40mm
<b>SINGLE LOUDSPEAKER PERFORMANCE</b>		
AES Power Handling	40 W	40 W
Continuous Power Handling ***	80 W	80 W
Sensitivity 2,83V / 1m ****	83,5 dB	83,5 dB
Sensitivity 1W/1m ****	83,5 dB	83,5 dB
Calculated Maximum SPL @ 1m*	111,5 dB	111,5 dB
<b>TRANSDUCER</b>		
Type	Full Range	Full Range
Nominal size	1x 76mm	1x 76mm
Nominal Impedance	8Ω	8Ω
Loudspeaker EQ	Not required, Garvan Preset EQ, Filter and protection available	Not required, Garvan Preset EQ, Filter and protection available
Recommended High-Pass Filter Protection	80 Hz with 48 dB/ Oct. High pass Filter	80 Hz with 48 dB/ Oct. High pass Filter
Frequency Response (-3 dB)	115 Hz – 16 kHz **	115 Hz – 16 kHz **
Frequency Range (-10 dB)	88 Hz – 20 kHz	88 Hz – 20 kHz
Nominal Coverage Angle (1 KHz - 4 kHz)	> 120°	> 120°
Nominal Coverage (1 KHz – 10 kHz)	90°	90°
<b>PHYSICAL</b>		
Frame Material	zinc-plated metal	zinc-plated metal
Speaker support Material	Lacquered or galvanic metal support	Lacquered or galvanic metal support
Cover	Lacquered or galvanic metal Grille/ Brushed stainless steel Grille / Fabric covered frame.	Lacquered or galvanic metal Grille/ Brushed stainless steel Grille / Fabric covered frame.

ENVIRONMENTAL FEATURES		
Environment of Use	Indoor environments	Indoor environments
Operating Temperature Range *****		
environmental protection.		
Connectors	Push connector, mounted on speaker. Accepts 18 AWG (0.8 mm <sup>2</sup> ) to 15 AWG (2,08 mm <sup>2</sup> ) size wire.	Push connector, mounted on speaker. Accepts 18 AWG (0.8 mm <sup>2</sup> ) to 15 AWG (2,08 mm <sup>2</sup> ) size wire.
Maximum Ceiling Thickness		
Product Dimensions		
Ceiling Cutout		
Net Weight, Frame		
Net Weight, Loudspeaker		
Net Weight, Cover		
LOGISTICAL DATA		
Packaging dimensions		
Shipping Weight		
Quantity of products per package	1 to 2 based on logistics optimization per shipment	1 to 2 based on logistics optimization per shipment
MAINTENANCE		
Cleaning Method	microfiber cloth	microfiber cloth
General precautions	do not use harsh cleaning products	do not use harsh cleaning products
INCLUDED ACCESSORIES		
	Jig set	Jig set
OPTIONAL ACCESSORIES		
Transformer for hight line voltage	TRT052 - 70/100V - 25/37/50W	TRT052 - 70/100V - 25/37/50W
Transformer for hight line voltage	TRT054 - 70/100V - 10/15/20W	TRT054 - 70/100V - 10/15/20W
Cover installation kit	GAR136	GAR136
Sound-absorbing material kit for installation		
CABLE SIZE/LOAD	8 ohm	4 ohm
2 sq mm.	20m / 65ft.	10m / 32ft.
2,5 sq mm.	30m / 100ft.	15m / 50ft.
4 sq mm.	60m / 200ft.	30m / 100ft.
NOTES:		
<p>* Maximum SPL calculated from sensitivity and power handling specifications, using a signal with crest factor 4 (12dB), exclusive of power compression.</p> <p>** With dedicated preset</p> <p>*** Power on Continuous Program is defined as 3 dB greater than the Nominal rating.</p> <p>**** average SPL measured from 200 Hz to 1,5 kHz</p> <p>***** With dedicated ignition and maintenance process</p>		

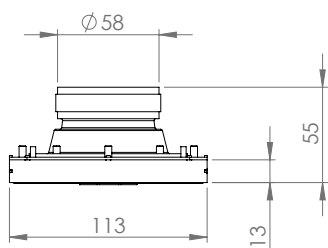
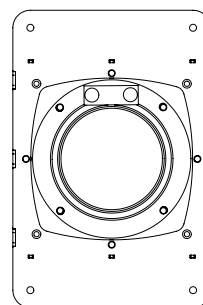
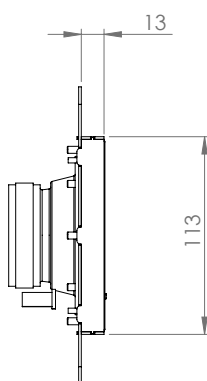
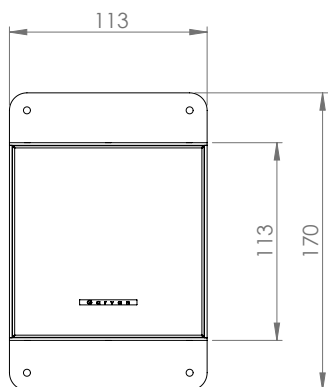
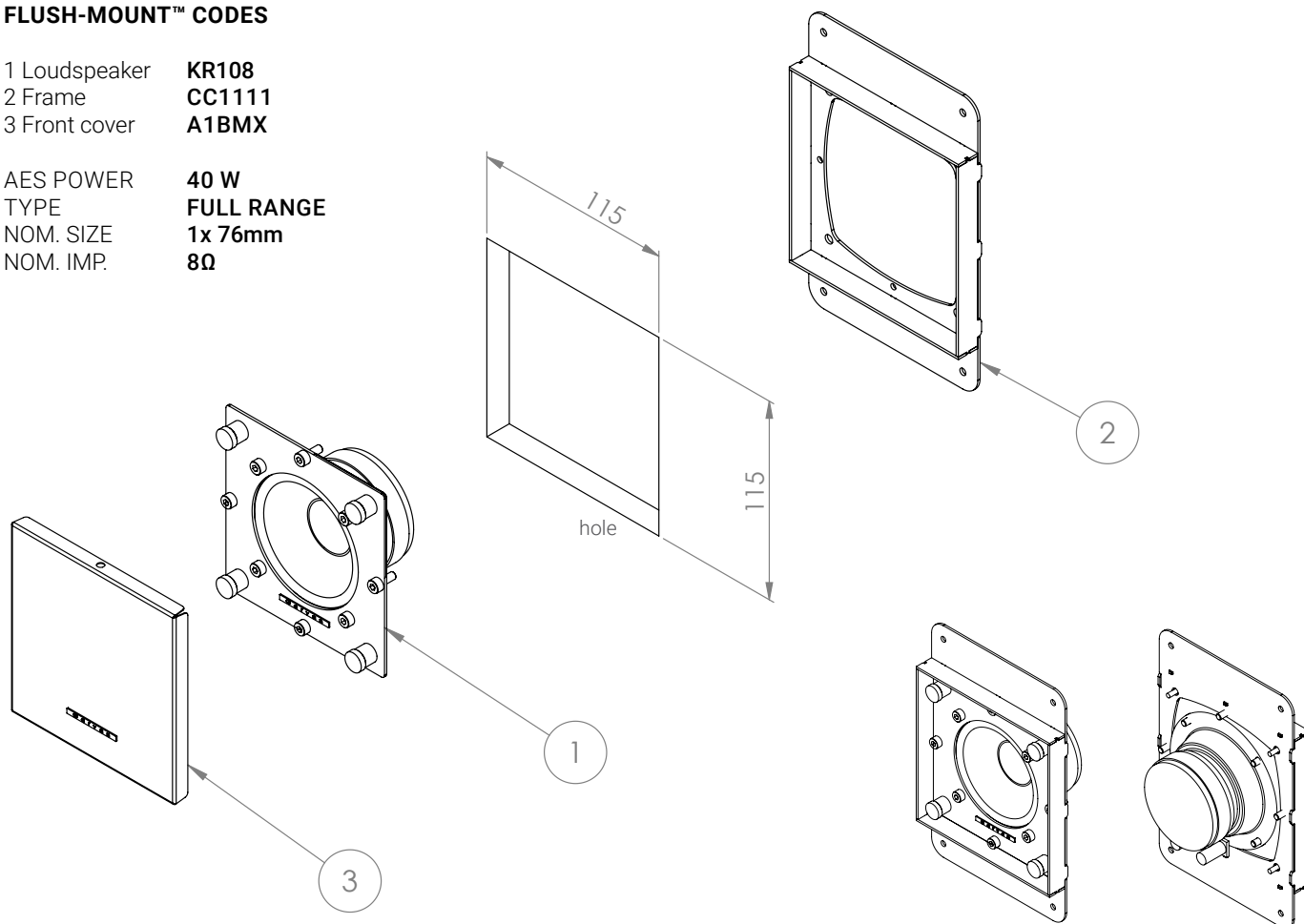
# KR108 / CC1111

## FLUSH-MOUNT™ PLASTERBOARD PRODUCT SHEET

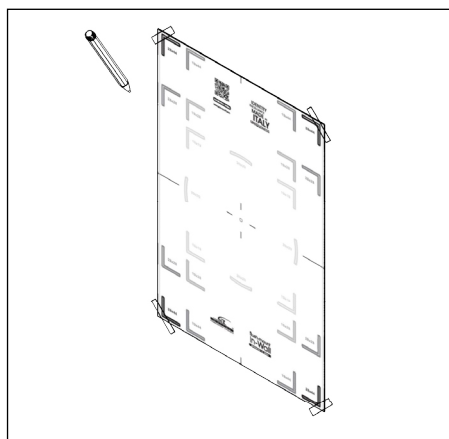
### FLUSH-MOUNT™ CODES

1 Loudspeaker **KR108**  
2 Frame **CC1111**  
3 Front cover **A1BMX**

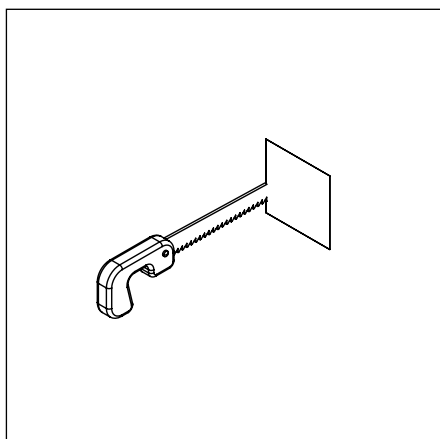
AES POWER **40 W**  
TYPE **FULL RANGE**  
NOM. SIZE **1x 76mm**  
NOM. IMP. **8Ω**



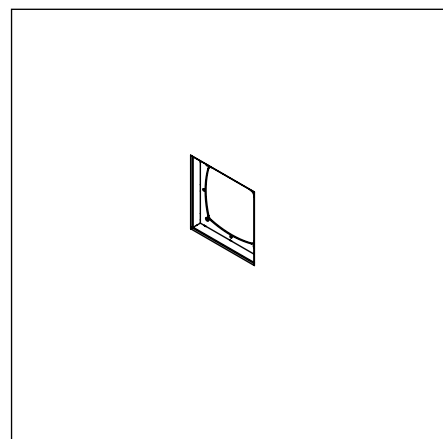
# INST. INSTRUCTIONS **KR108 / CC1111 Flush-Mount™** Plasterboard



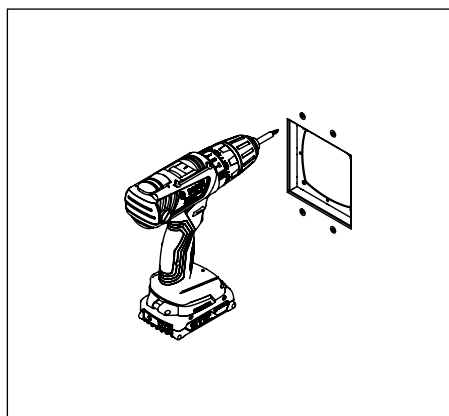
1 Jig set



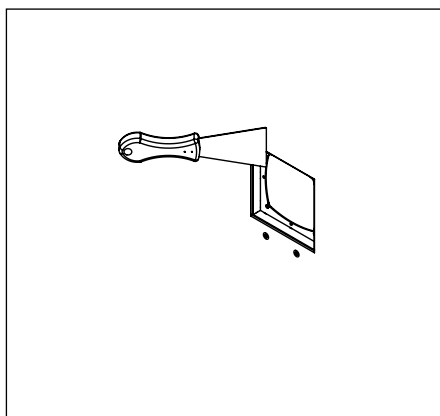
2



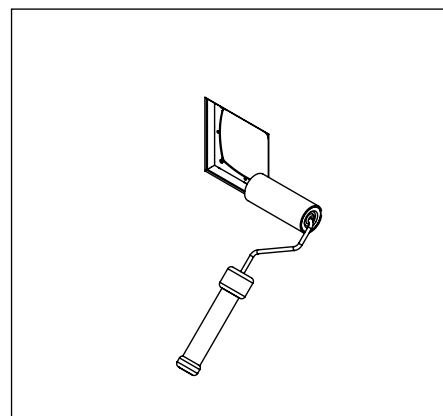
3



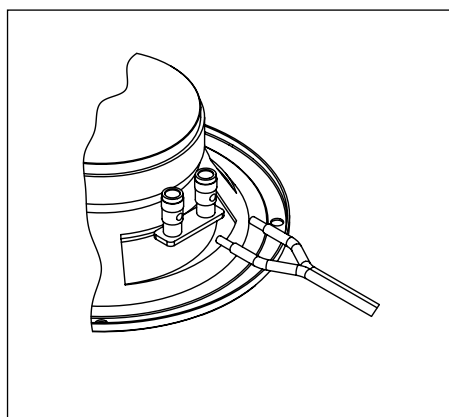
4



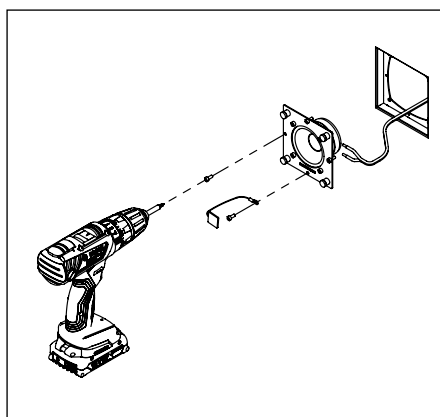
5



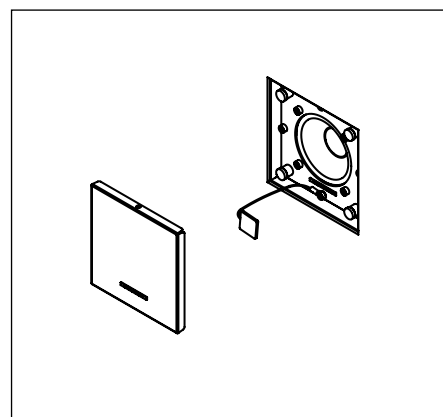
6



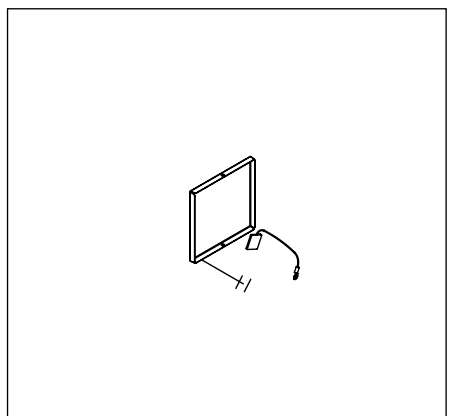
7



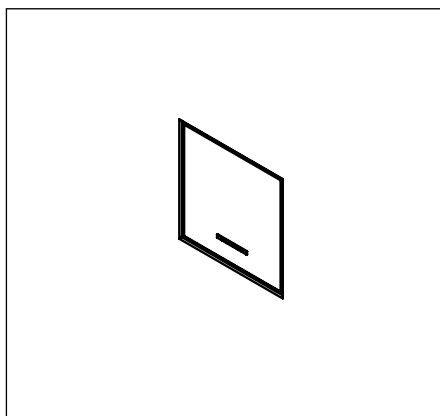
8



9



10



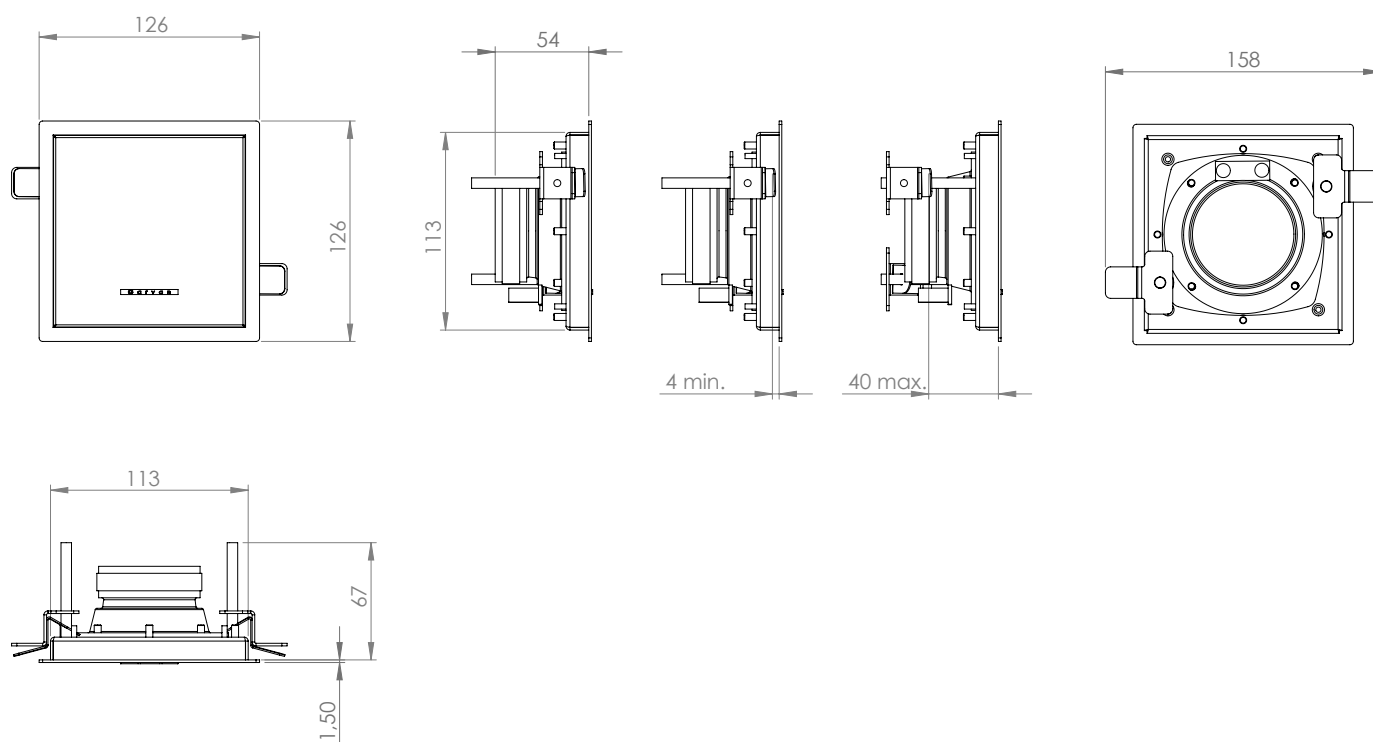
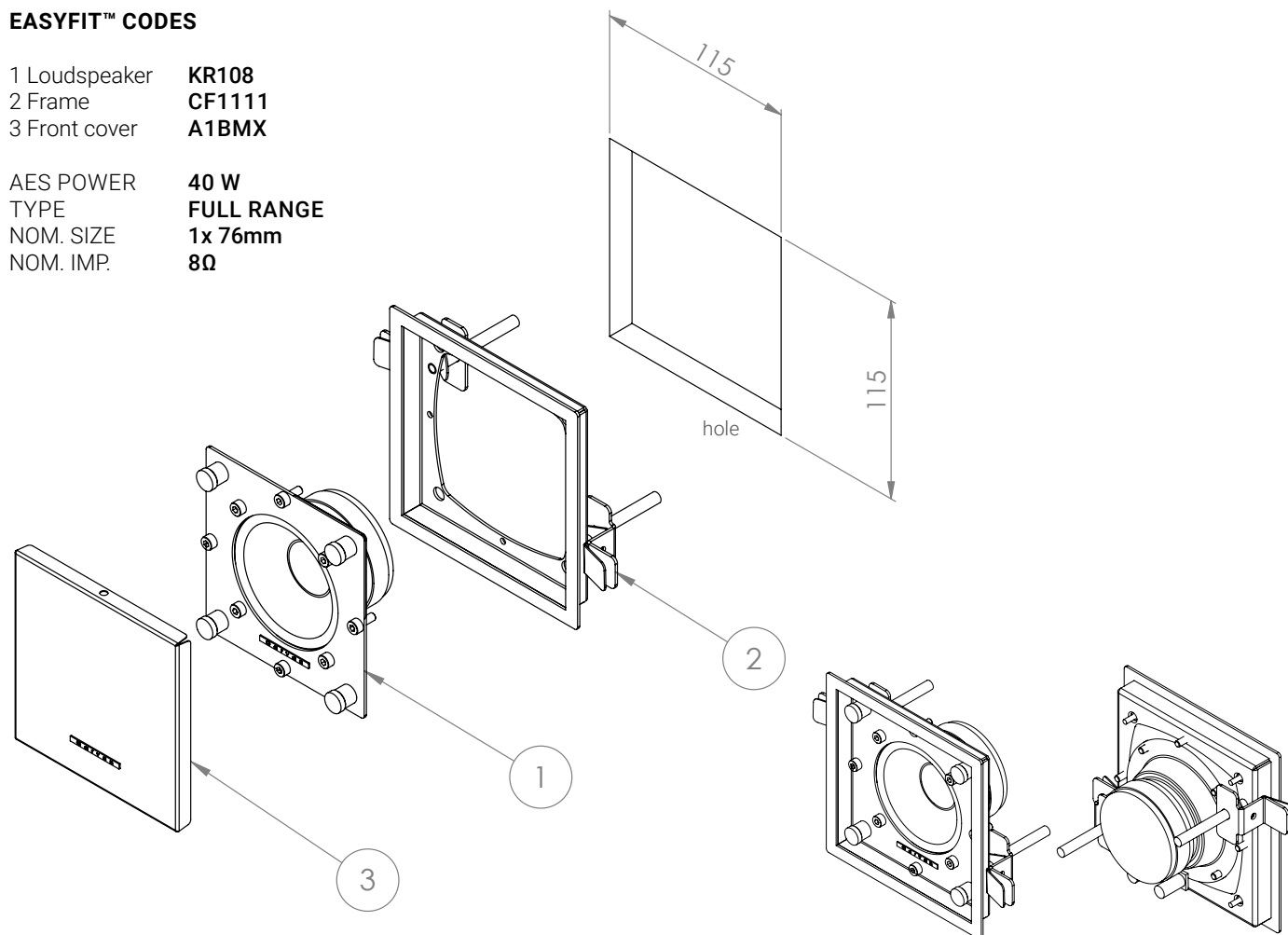
11



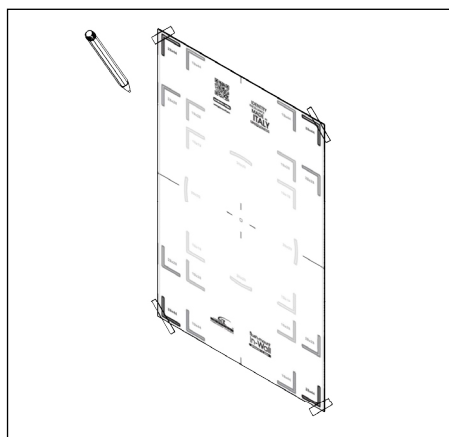
### EASYFIT™ CODES

1 Loudspeaker **KR108**  
2 Frame **CF1111**  
3 Front cover **A1BMX**

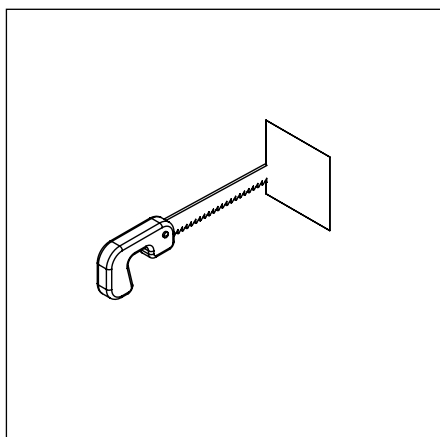
AES POWER **40 W**  
TYPE **FULL RANGE**  
NOM. SIZE **1x 76mm**  
NOM. IMP. **8Ω**



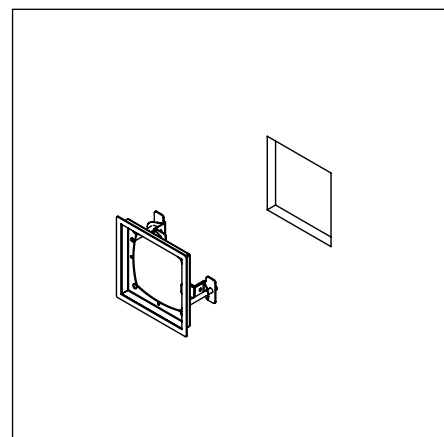
# INSTALLATION INSTRUCTIONS **KR108 / CF1111 Easy-Fit™**



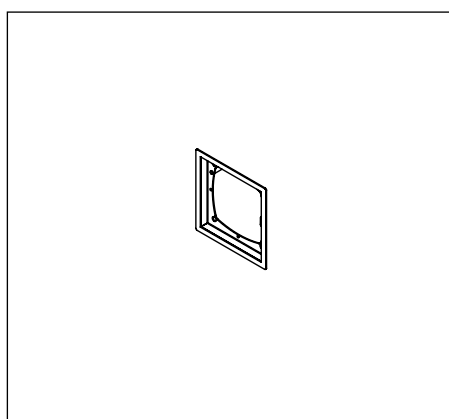
1 Jig set



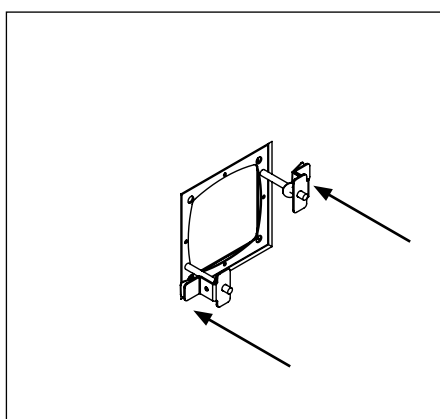
2



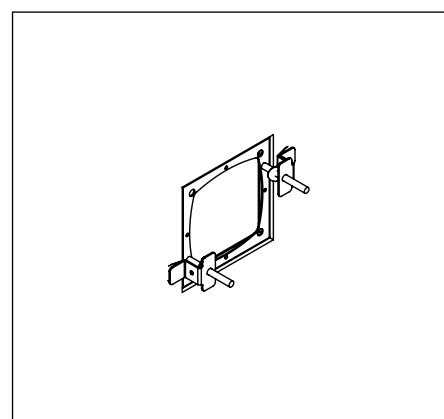
3



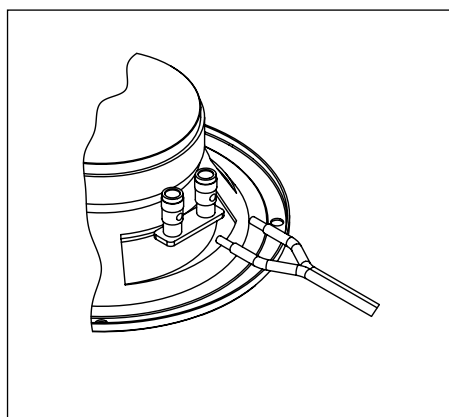
4



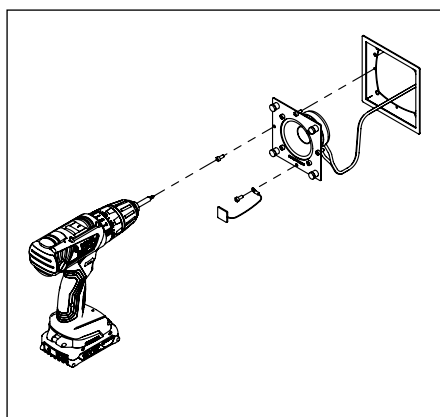
5



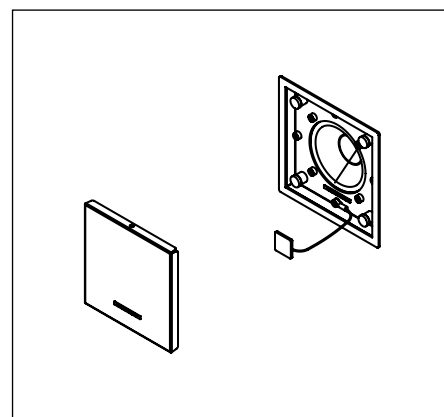
6



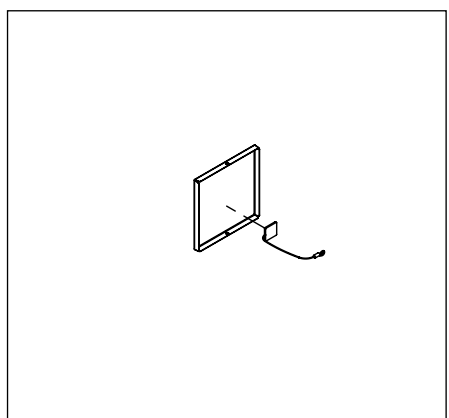
7



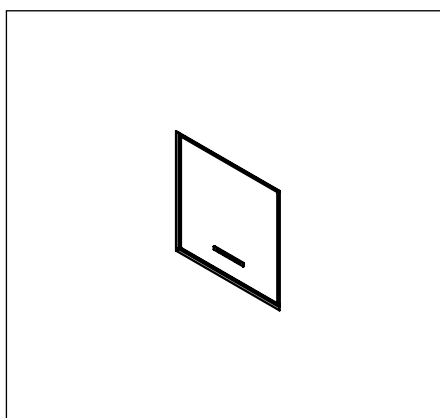
8



9



10



11

