



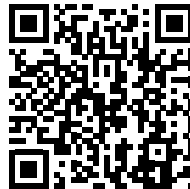
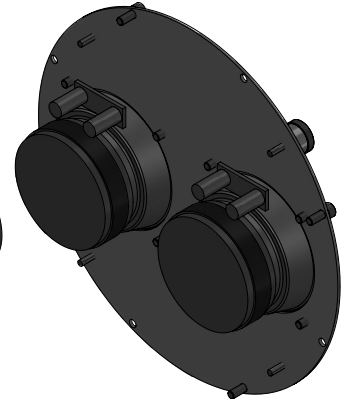
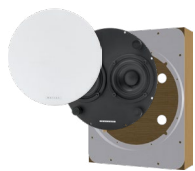
Plasterboard



Easy-Fit



Concrete wall



**SCAN OR CLICK TO EXTEND
YOUR GARVAN WARRANTY FOR FREE!**

3 years included, with the option to add
2 extra years at no additional cost.

OVERVIEW DESCRIPTION – UNIQUE DESCRIPTION PRODUCT

2x 3" (76 mm) full-range single point stereo loudspeaker, 80 W max, for in-wall and in-ceiling installation with steel mounting frame and speaker body, designed for optimum performance and durability, even in harsh environments. This product supports in-wall installation with different integration solutions, including FiloMuro™, suitable for plasterboard and masonry walls, and EasyFit™, ideal for installation in plasterboard walls or other materials such as wood panels, metal and porcelain tiles, with thicknesses ranging from 4 to 40 mm. The 3" (76 mm) full-range loudspeaker features a cathodically treated magnet assembly for corrosion resistance, a treated cellulose cone and a rubber surround for wide linear sound dispersion across the entire frequency range for excellent voice intelligibility. The 2 speakers can be connected separately to the two channels of a stereo amplifier to reproduce the music streams and contents in stereo, or they can be connected in series or parallel to each other. The connection to the amplifier is via spring terminals that can accommodate cables up to AWG14 caliber. The aesthetic cover is firmly fixed by powerful neodymium magnets. The grill cover can be customized in various materials, including perforated steel, which can be painted white or pre-painted according to RAL or NCS codes and even treated with galvanic effects.

KEY FEATURES

3" (76 mm) Full-Range Driver

Delivers natural, intelligible sound with wide frequency response.

High Output Power

80 W max with peak SPL up to 111.5 dB @ 1 meter.

Wide Bandwidth

Frequency response from 88 Hz to 20 kHz (-10 dB), perfect for background music and speech.

Compact Design for Flush Installation

Ideal for in-wall and in-ceiling use in residential and commercial environments.

Steel Frame & Marine Plywood Backbox

Built to withstand humidity and harsh conditions, ensuring long-term durability.

FiloMuro™ System for Masonry Walls

Flush-mounted system with steel frame and formwork for precise alignment on plastered surfaces.

EasyFit™ Mounting System

Tool-free installation on a variety of materials (4–40 mm thick).

Interchangeable Magnetic Grille

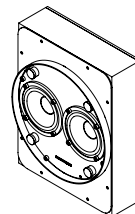
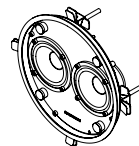
Neodymium magnets ensure secure, invisible grille attachment.

Customizable Finish Options

Grilles available in paintable perforated steel, galvanic treatments, graphics, or acoustic fabrics in multiple colors.

3+1+1 Year Warranty

Includes 3 years standard + 2 years free extension available upon registration.



INSTALLATION NAME	Flush-Mount™ Plasterboard	Easy-Fit™	Flush-Mount™ Concrete wall
Installation Type	In Wall / In Ceiling Speaker, free air	In Wall / In Ceiling Speaker, free air	In Wall / In Ceiling Speaker, Closed box
Surface Compatibility	Suitable for installation in Plasterboard, wooden panels, modular panel, and similar.	Suitable for installation in Plasterboard, wooden panels, modular panel, and similar.	Suitable for installation in Concrete Wall and similar.
Installation Requirements	Required support thickness: 12,5- 25mm	Required support thickness: 4-40mm	Minimum required wall thickness: 90mm

SINGLE LOUDSPEAKER PERFORMANCE			
AES Power Handling	40 W + 40 W	40 W + 40 W	40 W + 40 W
Continuous Power Handling ***	80 W + 80 W	80 W + 80 W	80 W + 80 W
Sensitivity 2,83V / 1m ****	83,5 dB + 83,5 dB	83,5 dB + 83,5 dB	83,5 dB + 83,5 dB
Sensitivity 1W/1m ****	83,5 dB + 83,5 dB / 89,5 dB	83,5 dB + 83,5 dB / 89,5 dB	83,5 dB + 83,5 dB / 89,5 dB
Calculated Maximum SPL @ 1m*	111,5 dB + 111,5 dB / 117,5 dB	111,5 dB + 111,5 dB / 117,5 dB	111,5 dB + 111,5 dB / 117,5 dB

TRANSDUCER			
Type	2x Full Range	2x Full Range	2x Full Range
Nominal size	2x 76mm	2x 76mm	2x 76mm
Nominal Impedance	8Ω + 8Ω	8Ω + 8Ω	8Ω + 8Ω
Loudspeaker EQ	Not required, Garvan Preset EQ, Filter and protection available	Not required, Garvan Preset EQ, Filter and protection available	Not required, Garvan Preset EQ, Filter and protection available
Recommended High-Pass Filter Protection	80 Hz with 48 dB/ Oct. High pass Filter	80 Hz with 48 dB/ Oct. High pass Filter	80 Hz with 48 dB/ Oct. High pass Filter
Frequency Response (-3 dB)	115 Hz - 16 kHz **	115 Hz - 16 kHz **	115 Hz - 16 kHz **
Frequency Range (-10 dB)	85 Hz - 20 kHz **	85 Hz - 20 kHz **	87 Hz - 20 kHz **
Nominal Coverage Angle (1 KHz - 4 kHz)	> 120°	> 120°	> 120°
Nominal Coverage (1 KHz - 10 kHz)	90°	90°	90°

PHYSICAL			
Frame Material	zinc-plated metal	zinc-plated metal	"zinc-plated metal + phenolic multilayer wood"
Speaker support Material	Laquered or galvanic metal support	Laquered or galvanic metal support	Laquered or galvanic metal support
Cover	Lacquered or galvanic metal Grille/ Brushed stainless steel Grille / Fabric covered frame.	Lacquered or galvanic metal Grille/ Brushed stainless steel Grille / Fabric covered frame.	Lacquered or galvanic metal Grille/ Brushed stainless steel Grille / Fabric covered frame.

ENVIRONMENTAL FEATURES			
Environment of Use	Indoor environments	Indoor environments	Indoor environments
Operating Temperature Range *****			
environmental protection.			
Connectors	Push connector, mounted on speaker. Accepts 18 AWG (0.8 mm ²) to 15 AWG (2,08 mm ²) size wire.	Push connector, mounted on speaker. Accepts 18 AWG (0.8 mm ²) to 15 AWG (2,08 mm ²) size wire.	Push connector, mounted on speaker. Accepts 18 AWG (0.8 mm ²) to 15 AWG (2,08 mm ²) size wire.
Maximum Ceiling Thickness			
Product Dimensions			
Ceiling Cutout			
Net Weight, Frame			
Net Weight, Loudspeaker			
Net Weight, Cover			
LOGISTICAL DATA			
Packaging dimensions			
Shipping Weight			
Quantity of products per package	1 to 2 based on logistics optimization per shipment	1 to 2 based on logistics optimization per shipment	1 to 2 based on logistics optimization per shipment
MAINTENANCE			
Cleaning Method	microfiber cloth	microfiber cloth	microfiber cloth
General precautions	do not use harsh cleaning products	do not use harsh cleaning products	do not use harsh cleaning products
INCLUDED ACCESSORIES			
	Jig set	Jig set	Jig set
OPTIONAL ACCESSORIES			
Transformer for high line voltage	TRT052 - 70/100V - 25/37/50W	TRT052 - 70/100V - 25/37/50W	TRT052 - 70/100V - 25/37/50W
Transformer for high line voltage	TRT054 - 70/100V - 10/15/20W	TRT054 - 70/100V - 10/15/20W	TRT054 - 70/100V - 10/15/20W
Cover installation kit	GAR136	GAR136	GAR136
Sound-absorbing material kit for installation			
Cable size/load	8 ohm	4 ohm	2 ohm
2 sq mm.	20m / 65ft.	10m / 32ft	5m / 16ft
2,5 sq mm.	30m / 100ft.	15m / 50ft	7,5m / 25ft
4 sq mm.	60m / 200ft.	30m / 100ft	15m / 50ft

NOTES:

* Maximum SPL calculated from sensitivity and power handling specifications, using a signal with crest factor 4 (12dB), exclusive of power compression.

** With dedicated preset

*** Power on Continuous Program is defined as 3 dB greater than the Nominal rating.

**** average SPL measured from 200 Hz to 1,5 kHz

***** With dedicated ignition and maintenance process

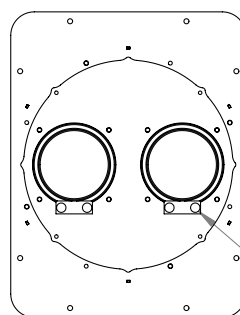
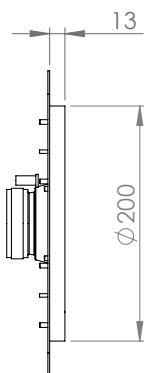
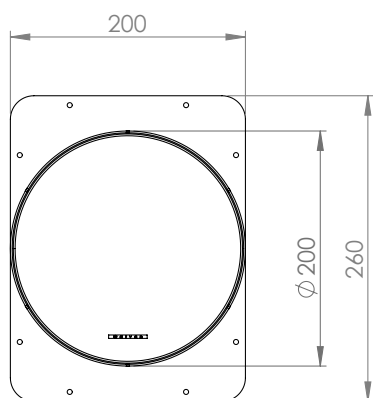
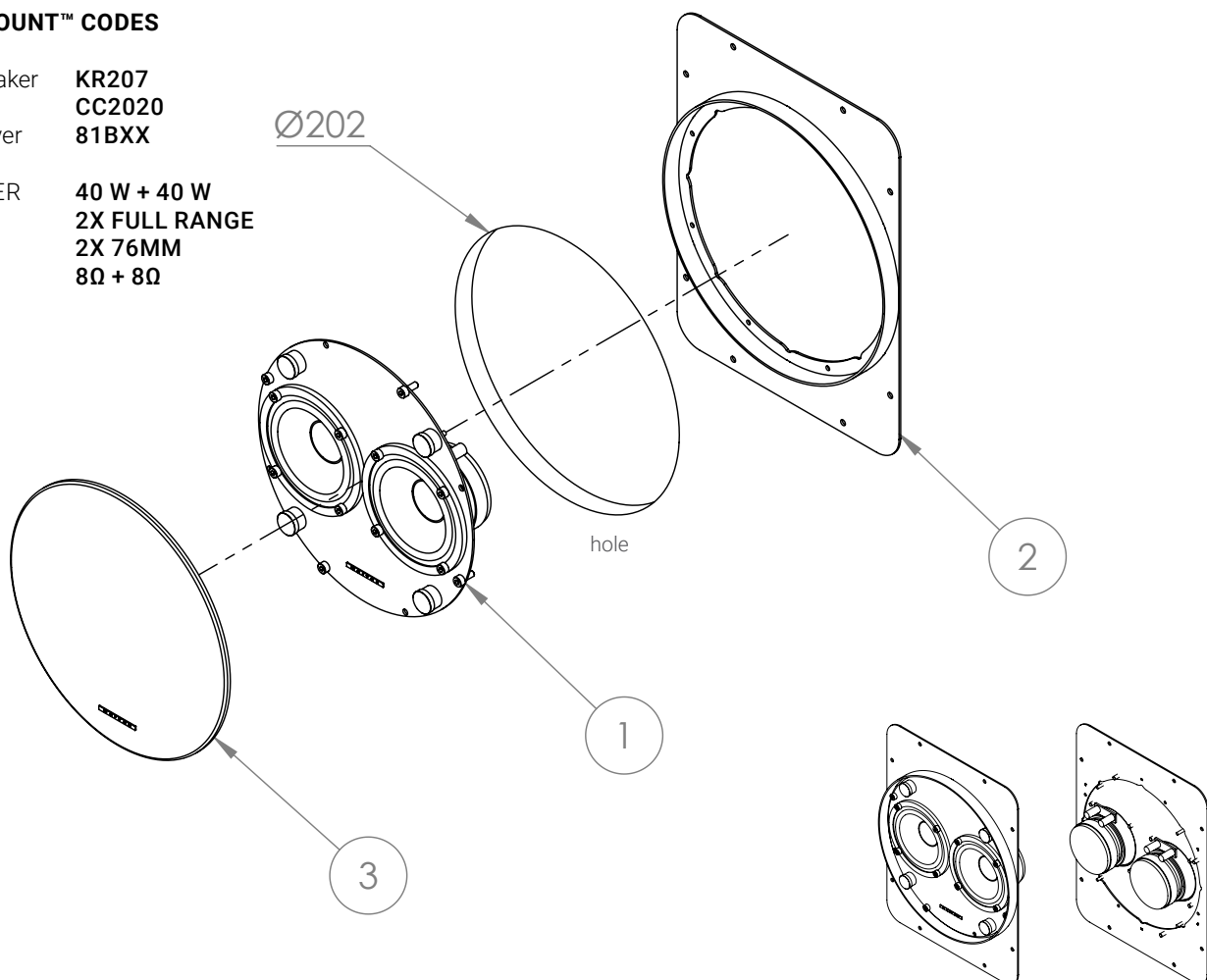
KR207 / CC2020

FLUSH-MOUNT™ PLASTERBOARD PRODUCT SHEET

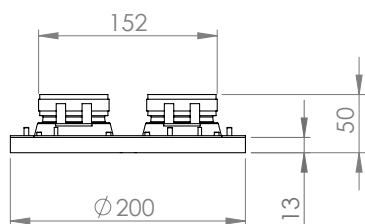
FLUSH-MOUNT™ CODES

1 Loudspeaker **KR207**
2 Frame **CC2020**
3 Front cover **81BXX**

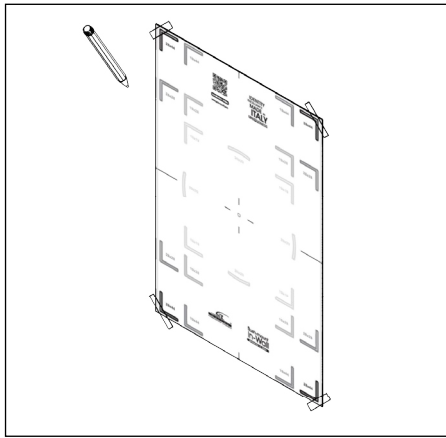
AES POWER **40 W + 40 W**
TYPE **2X FULL RANGE**
NOM. SIZE **2X 76MM**
NOM. IMP. **8Ω + 8Ω**



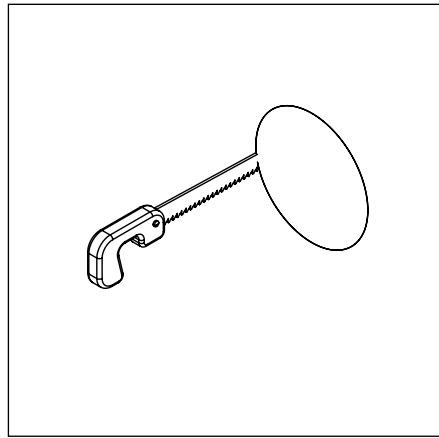
Push Connectors



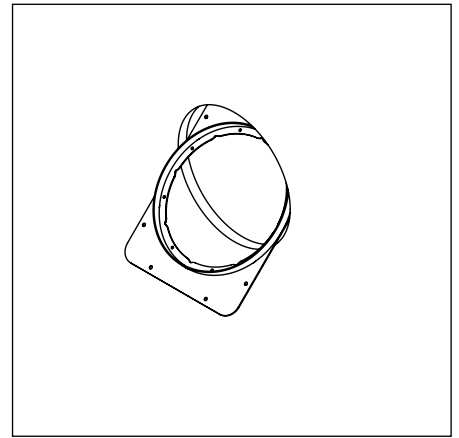
INST. INSTRUCTIONS **KR207 / CC2020 Flush-Mount™ Plasterboard**



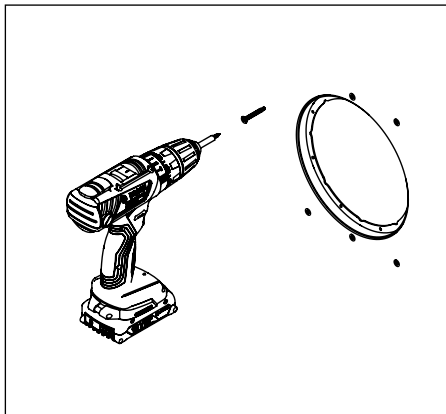
1 Jig set



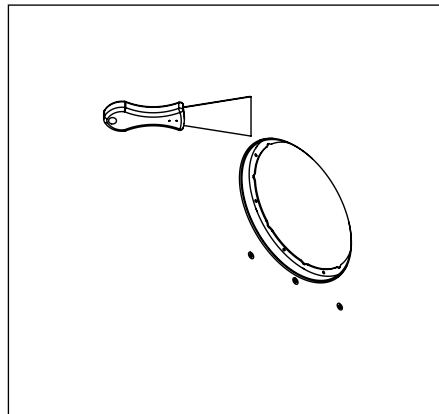
2



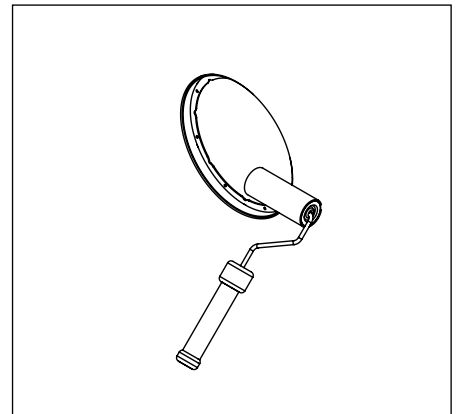
3



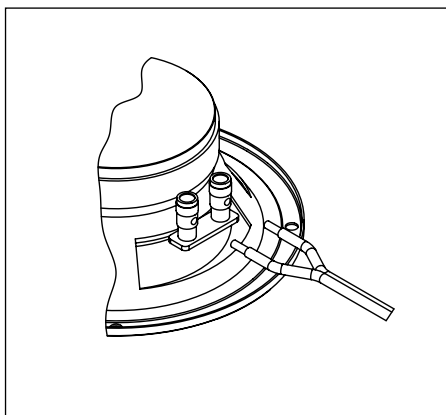
4



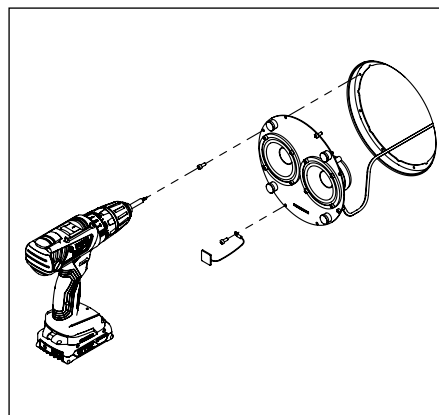
5



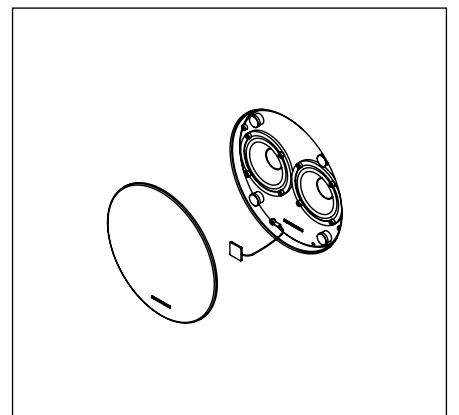
6



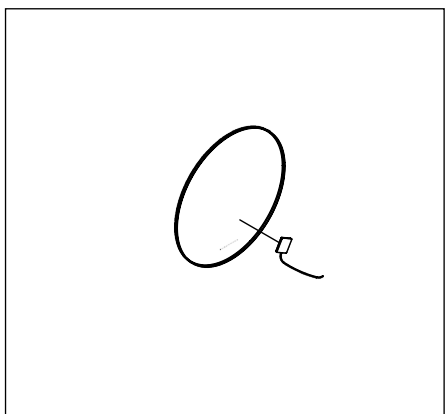
7



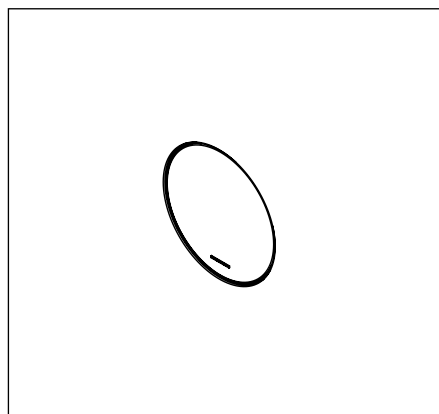
8



9



10



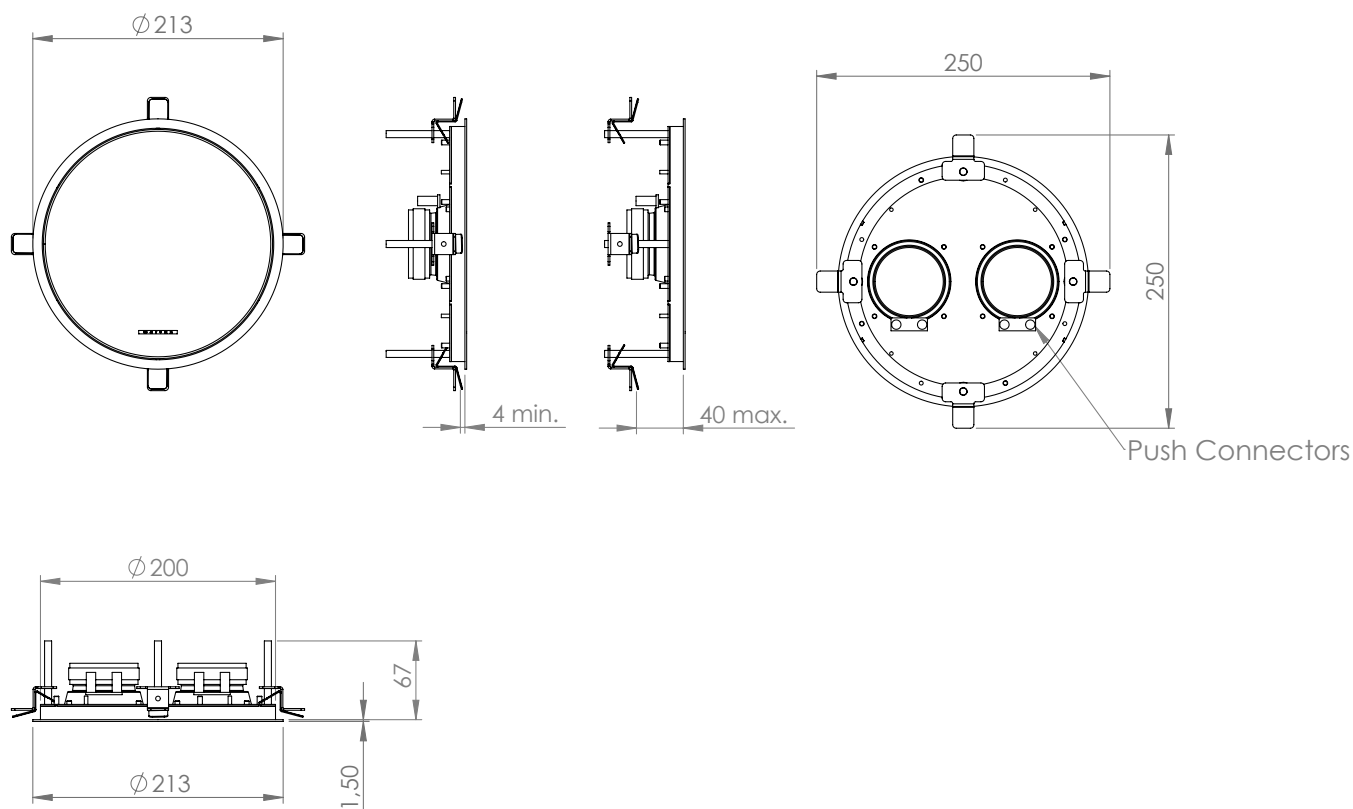
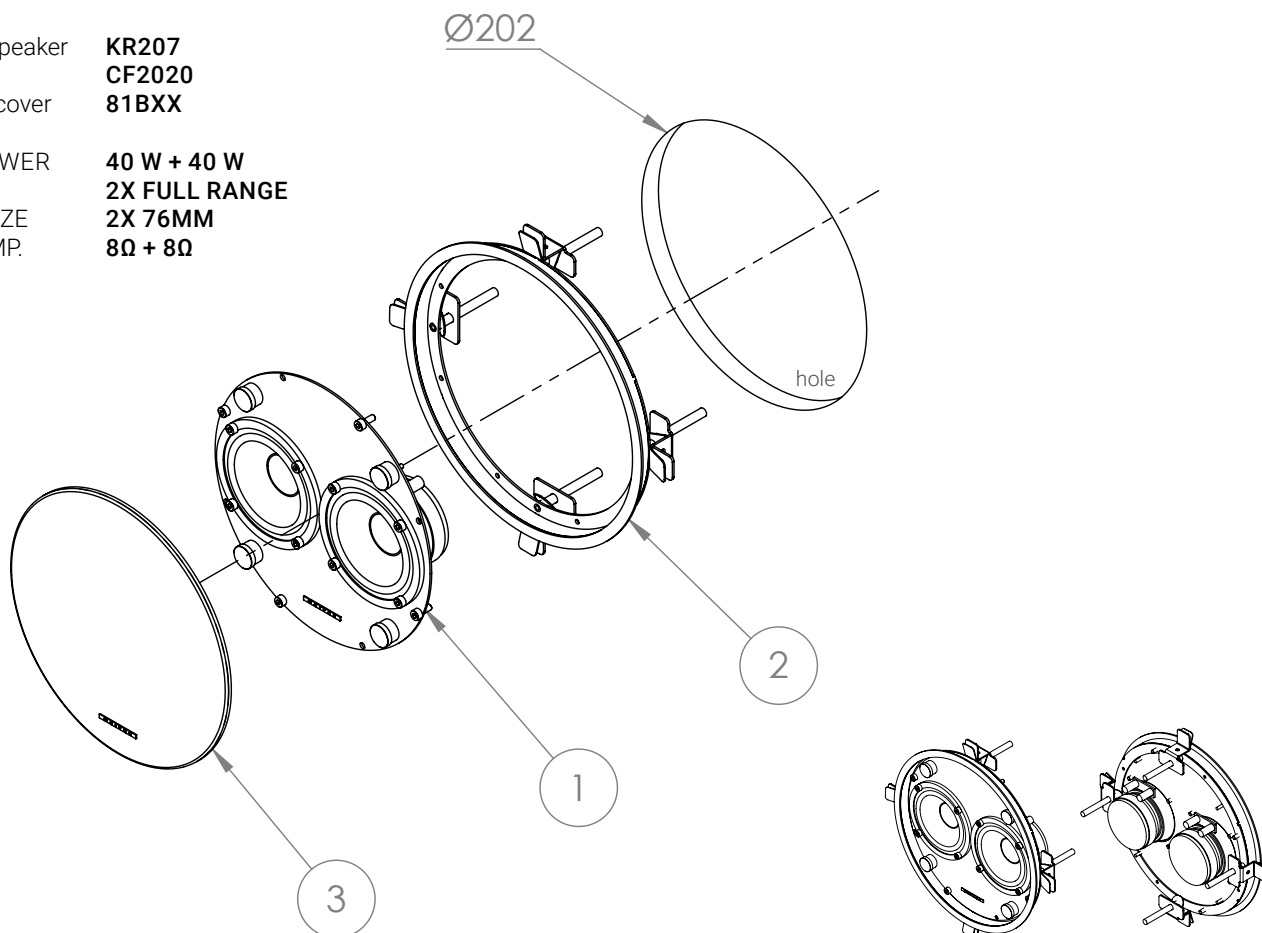
11



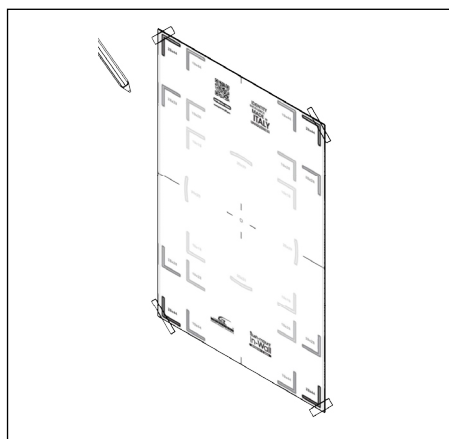
EASY-FIT™ CODES

1 Loudspeaker **KR207**
2 Frame **CF2020**
3 Front cover **81BXX**

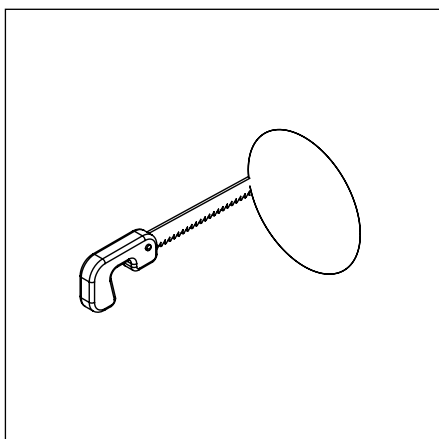
AES POWER **40 W + 40 W**
TYPE **2X FULL RANGE**
NOM. SIZE **2X 76MM**
NOM. IMP. **8Ω + 8Ω**



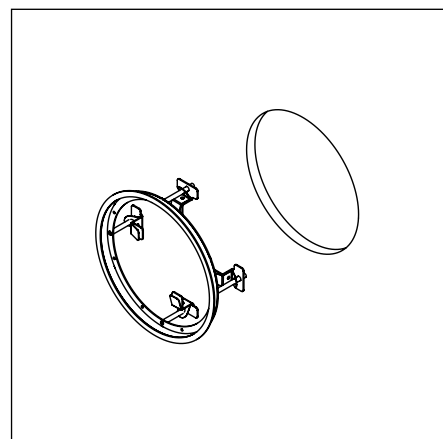
INSTALLATION INSTRUCTIONS **KR207 / CF2020 Easy-fit™**



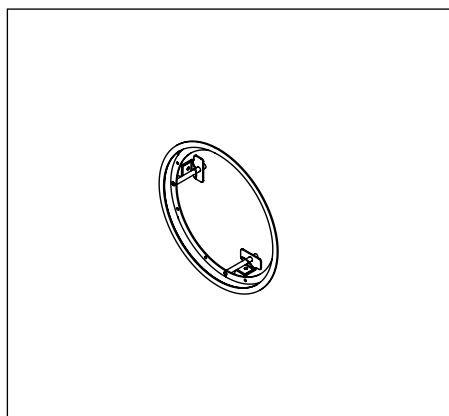
1 Jig set



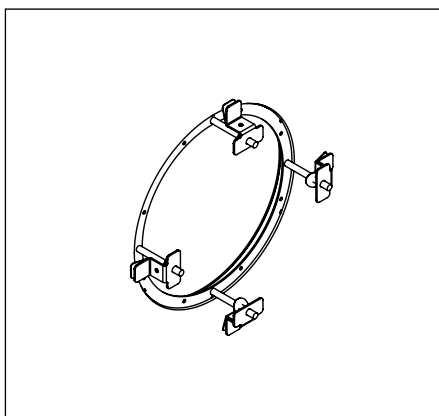
2



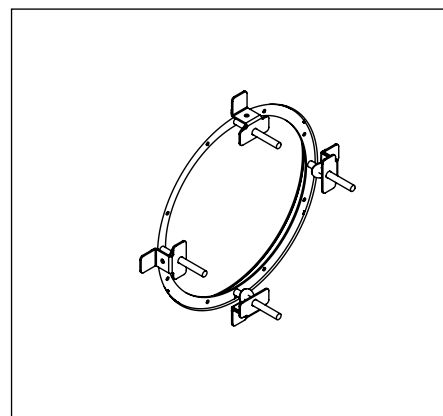
3



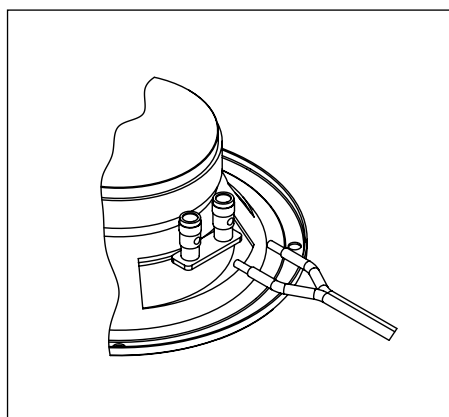
4



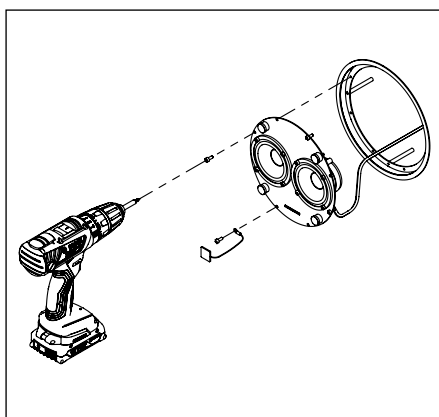
5



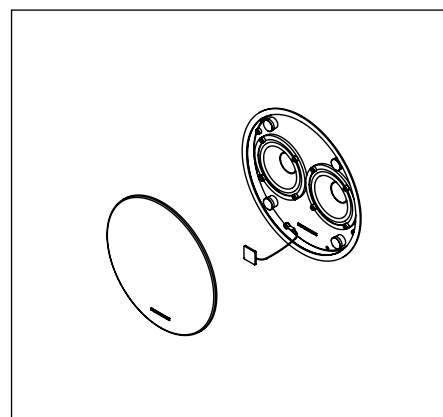
6



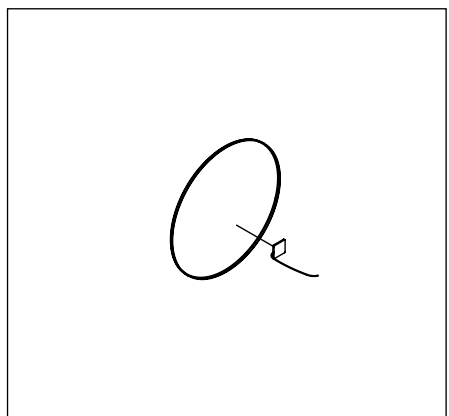
7



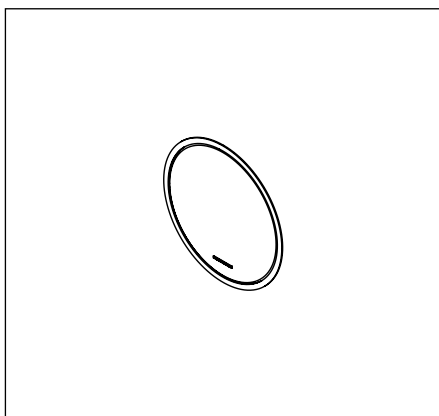
8



9



10



11



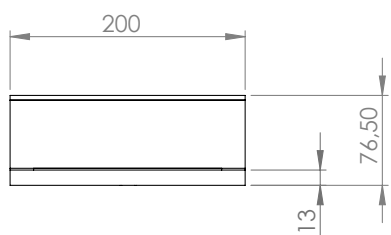
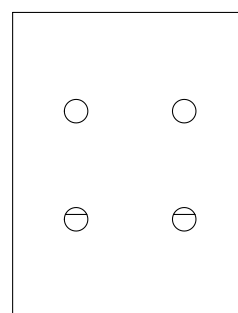
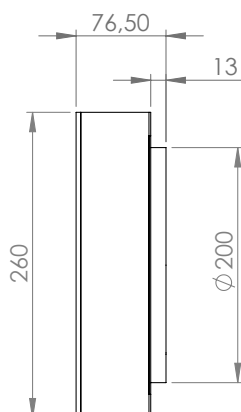
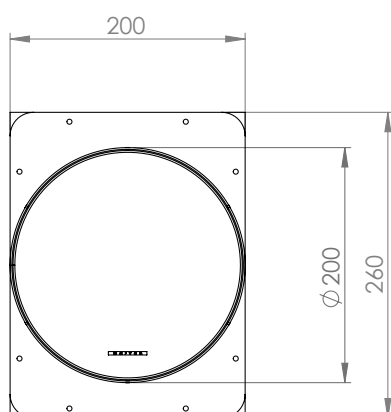
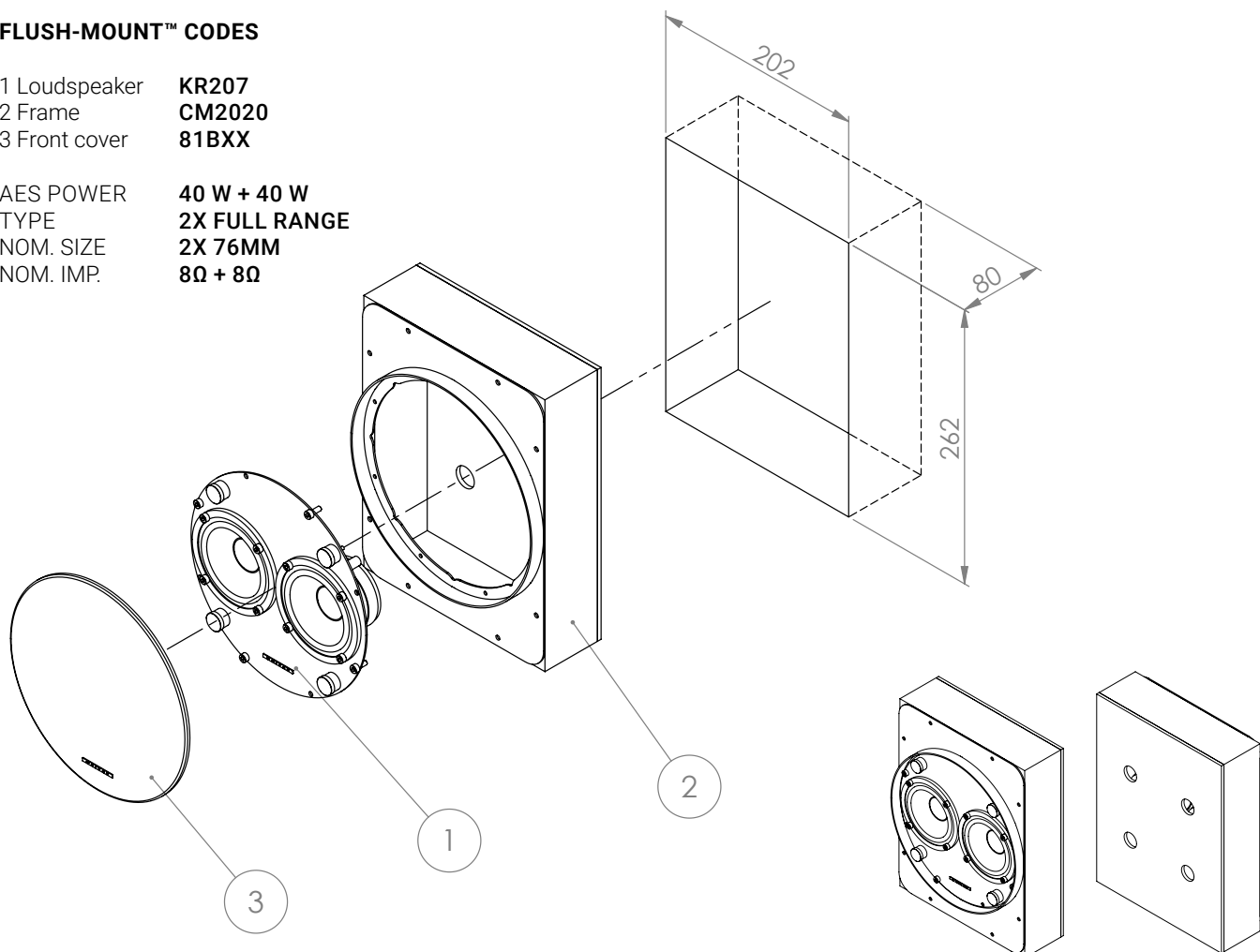
KR207 / CM2020

FLUSH-MOUNT™ CONCRETE WALL PRODUCT SHEET

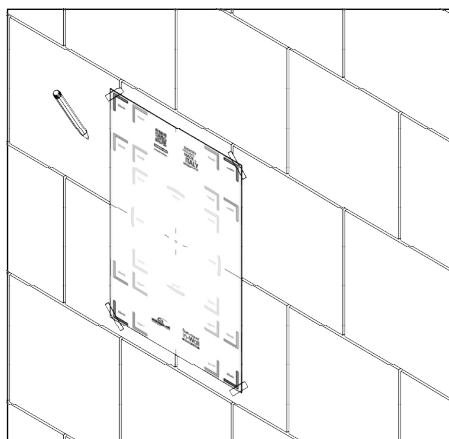
FLUSH-MOUNT™ CODES

1 Loudspeaker **KR207**
2 Frame **CM2020**
3 Front cover **81BXX**

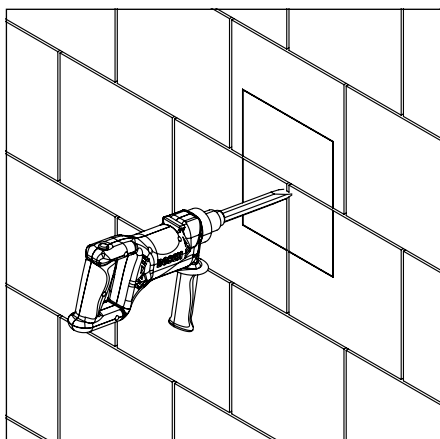
AES POWER **40 W + 40 W**
TYPE **2X FULL RANGE**
NOM. SIZE **2X 76MM**
NOM. IMP. **8Ω + 8Ω**



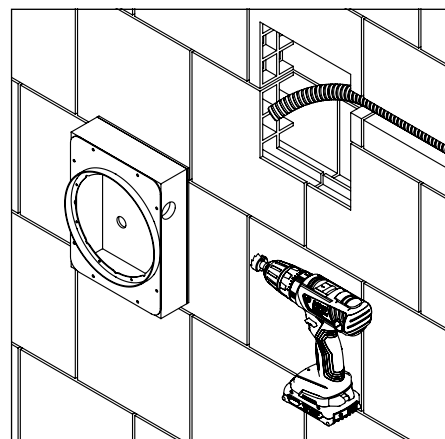
INST. INSTRUCTIONS KR111 / CM2020 Flush-Mount™ Concrete wall



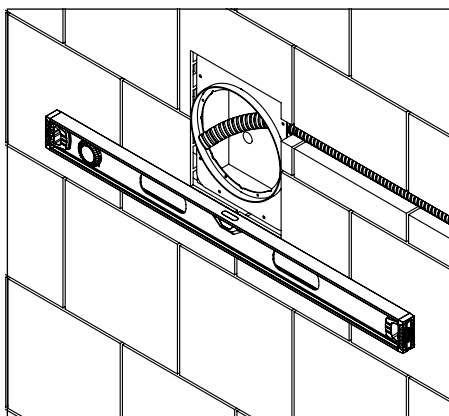
1 Jig set



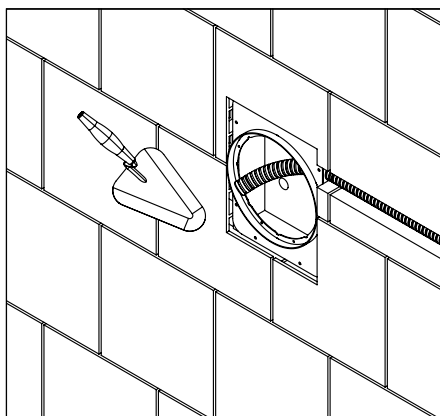
2



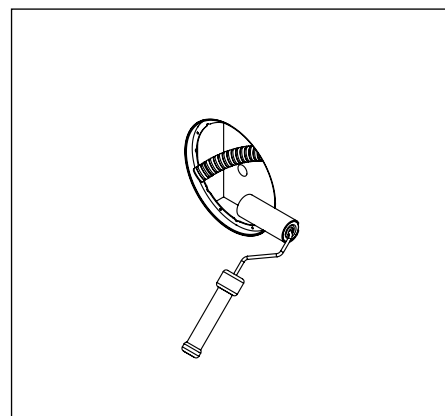
3



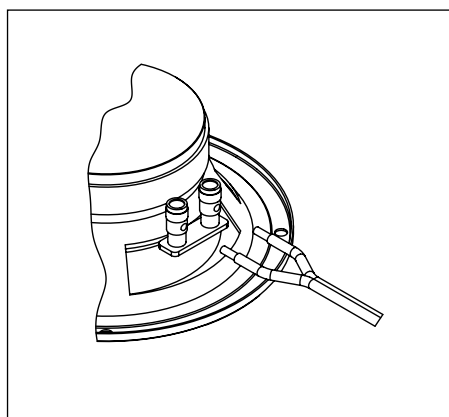
4



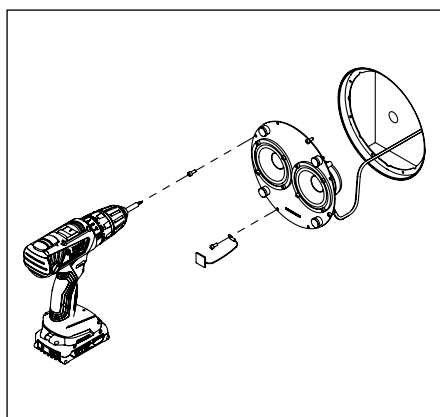
5



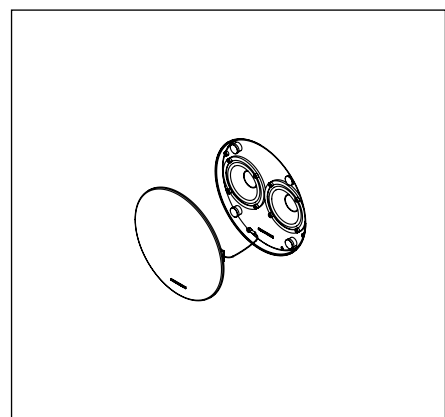
6



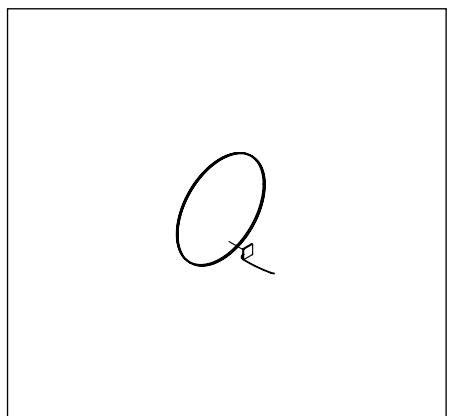
7



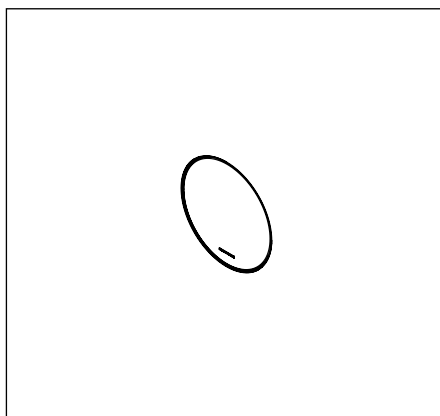
8



9



10



11

