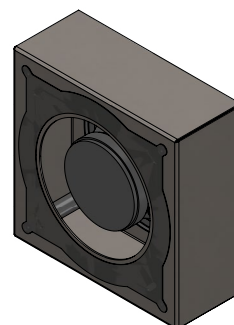
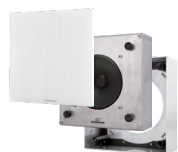




CORO™ COLLECTION



**SCAN OR CLICK TO EXTEND
YOUR GARVAN WARRANTY FOR FREE!**

3 years included, with the option to add
2 extra years at no additional cost.

OVERVIEW DESCRIPTION – UNIQUE DESCRIPTION PRODUCT

The Garvan KW12M is a compact full-range loudspeaker from the Coro™ Collection, engineered for on-wall and on-ceiling installations in both indoor and outdoor environments. With a 130 mm driver in a closed-box design, it delivers clear, natural sound with excellent coverage and reliability. Built from brushed or lacquered 316L stainless steel, the KW12M is designed to withstand demanding conditions, including marine environments, saunas, and steam rooms, with IP56 protection ensuring durability against humidity and water exposure. Lightweight and discreet, it blends Made in Italy craftsmanship with robust performance, making it ideal for residential, hospitality, and wellness applications.

KEY FEATURES

Full-range loudspeaker with 1 × 130 mm driver

Power handling: 50 W AES / 100 W continuous

Sensitivity: 88 dB (2.83V/1m and 1W/1m)

Maximum SPL: 117 dB @ 1 m

Frequency response: 95 Hz – 17 kHz (–3 dB) with preset EQ

Extended range: 75 Hz – 20 kHz (–10 dB)

Coverage: 100° (1–4 kHz) / 70° (1–10 kHz)

Closed-box stainless steel cabinet: brushed or lacquered 316L finish

Weather & marine resistant: suitable for outdoor use, saunas, and steam rooms (IP56)

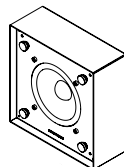
Operating temperature: –25 °C to +70 °C (–13 °F to 158 °F)

Installation versatility: fits concrete, plasterboard, wood, and modular panels

Connectors: push connector, accepts 18 AWG to 15 AWG wire

Lightweight: 2.36 kg for easy mounting

Extended warranty: 3+1+1 years with free registration



NAME INSTALLATION	On-wall
Type Installation	On-Wall / On-Ceiling Speaker, closed box
Surface Compatibility	Suitable for installation in, concrete wall, Plasterboard, wooden panels, modular panel, and similar.
Installation Requirements:	Support thickness suitable for product weight
SINGLE LOUDSPEAKER PERFORMANCE	
AES Power Handling	50 W
Continuous Power Handling ***	100 W
Sensitivity 2,83V / 1m ****	88 dB
Sensitivity 1W/1m ****	88 dB
Calculated Maximum SPL @ 1m*	117 dB
TRANSDUCER	
Type	Full Range
Nominal size	1x 130mm
Nominal Impedance	8Ω
Loudspeaker EQ	Not required, Garvan Preset EQ, Filter and protection available
Recommended High-Pass Filter Protection	75 Hz with 48 dB/Oct. High pass Filter
Frequency Response (-3 dB)	95 Hz - 17 kHz **
Frequency Range (-10 dB)	75 Hz – 20 kHz **
Nominal Coverage Angle (1 KHz - 4 kHz)	100 °
Nominal Coverage (1 KHz – 10 kHz)	70 °
PHYSICAL	
Frame Material	brushed or lacquered 316L stainless steel cabinet
Speaker support Material	Brushed aisi.316L stainless steel support
Cover	Laquered or galvanic metal Grille/ Brusced stainlenss steel Grille / Fabric covered frame.
ENVIRONMENTAL FEATURES	
Enviropment of Use	For use in out-door, marine, saunas and steam rooms
Operating Temperature Range *****	-25 °C to 70 °C (-13 °F to 158 °F)
environmental protection.	IP56
Connectors	Push connector, mounted on speaker. Accepts 18 AWG (0.8 mm ²) to 15 AWG (2,08 mm ²) size wire.
Maximum Ceiling Thickness	
Product Dimensions	
Ceiling Cutout	
Net Weight, Frame	
Net Weight, Loudspeaker	
Net Weight, Cover	

LOGISTICAL DATA			
Packaging dimensions			
Shipping Weight			
Quantity of products per package		1 to 2 based on logistics optimization per shipment	
MAINTENANCE			
Cleaning Method		microfiber cloth	
General precautions		do not use harsh cleaning products	
INCLUDED ACCESSORIES			
OPTIONAL ACCESSORIES			
Transformer for hight line voltage		TRT052 – 70/100V - 25/37/50W	
Transformer for hight line voltage		TRT054 – 70/100V - 10/15/20W	
Cover installation kit		GAR136	
Cable size/load	8 ohm	4 ohm	2 ohm
2 sq mm.	20m / 65ft.	10m / 32ft	5m / 16ft
2,5 sq mm.	30m / 100ft.	15m / 50ft	7,5m / 25ft
4 sq mm.	60m / 200ft.	30m / 100ft	15m / 50ft

NOTES:

* Maximum SPL calculated from sensitivity and power handling specifications, using a signal with crest factor 4 (12dB), exclusive of power compression.

** With dedicated preset

*** Power on Continuous Program is defined as 3 dB greater than the Nominal rating.

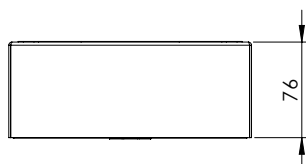
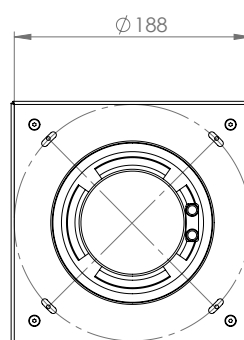
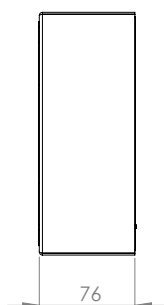
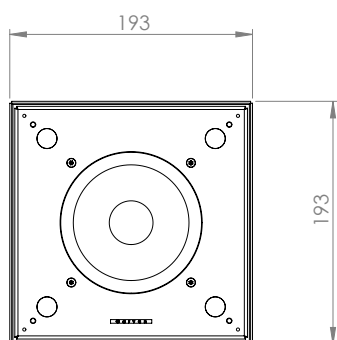
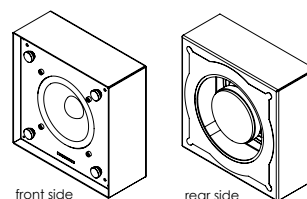
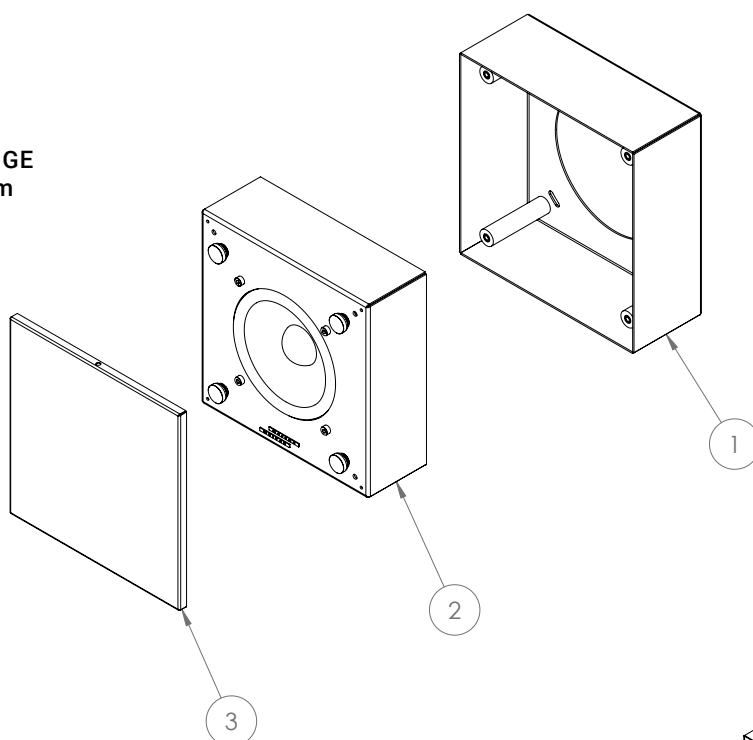
**** average SPL measured from 200 Hz to 1,5 kHz

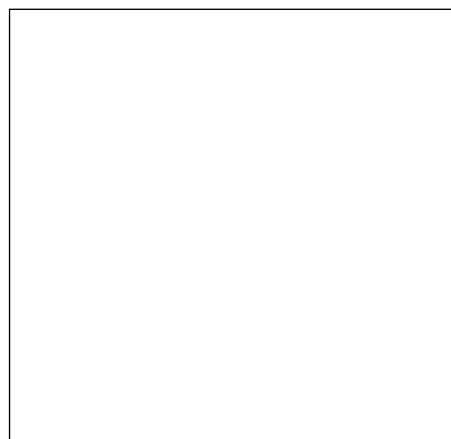
***** With dedicated ignition and maintenance process

ON-WALL CODES

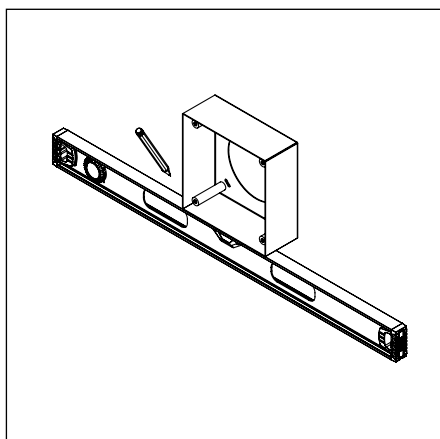
1 Loudspeaker **KW12M**
2 Frame **CW1111**
3 Front cover **11BXM**

AES POWER **50 W**
TYPE **FULL RANGE**
NOM. SIZE **1X 130 mm**
NOM. IMP. **8Ω**

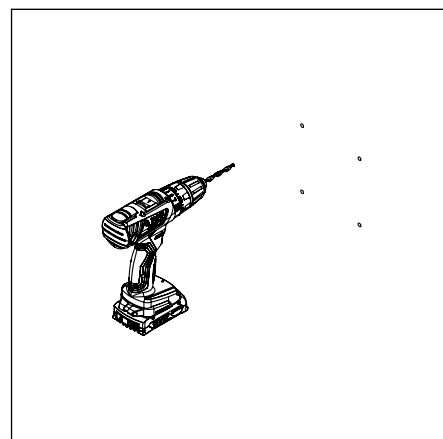




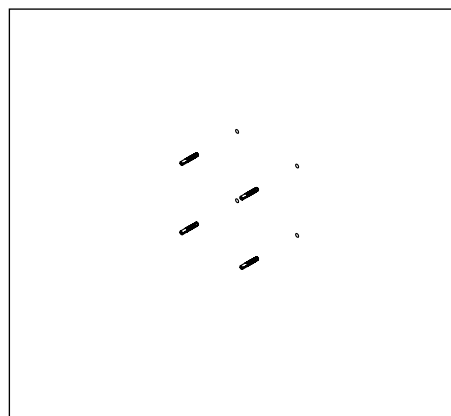
1 Jig set



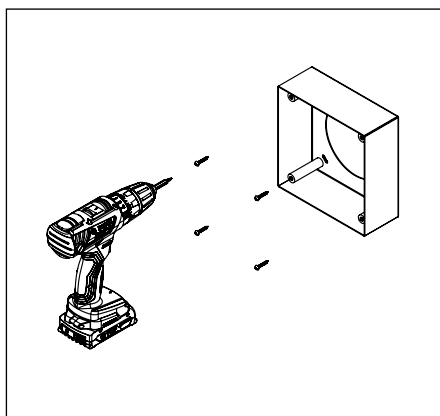
2



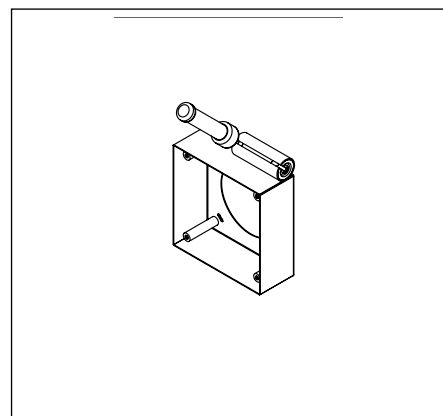
3



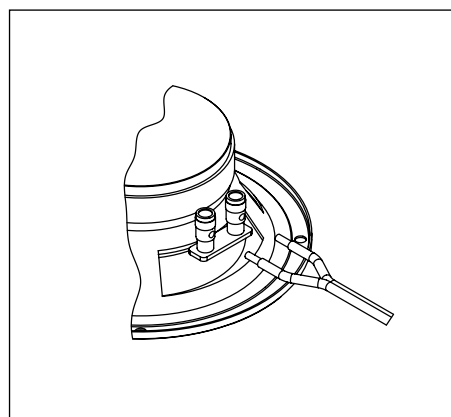
4



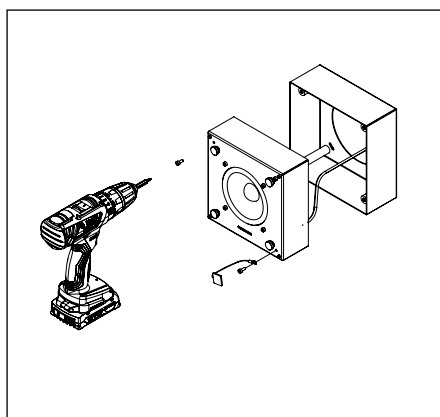
5



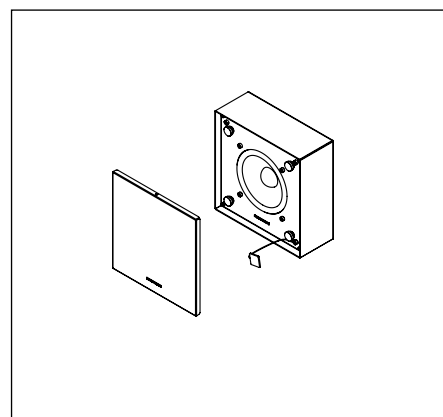
6



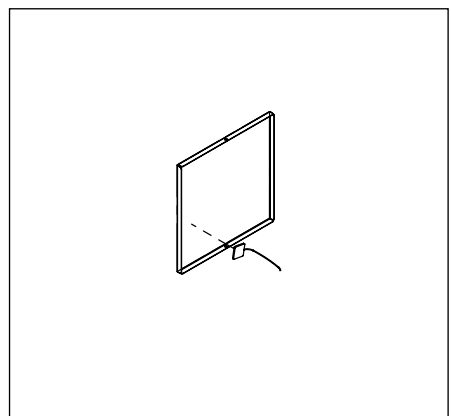
7



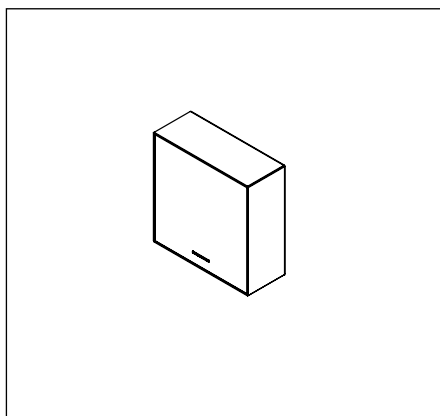
8



9



10



11

