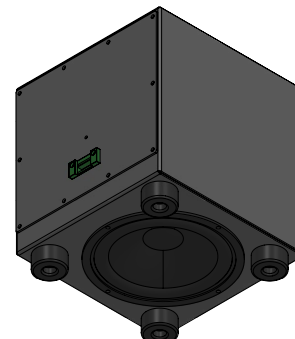
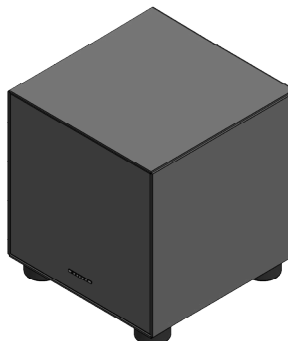
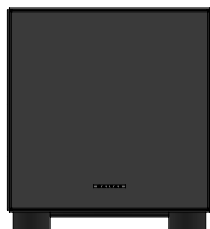


CORO™ COLLECTION



**SCAN OR CLICK TO EXTEND  
YOUR GARVAN WARRANTY FOR FREE!**

3 years included, with the option to add  
2 extra years at no additional cost.

## OVERVIEW DESCRIPTION – UNIQUE DESCRIPTION PRODUCT

The Garvan WA216P is a compact passive subwoofer from the Coro™ Collection, designed for free-standing installations in residential, hospitality, and commercial environments. Featuring a 130 mm woofer combined with a 160 mm passive radiator in a closed-box design, it delivers tight, controlled bass that enriches full-range loudspeaker systems. Its cabinet, available in black painted metal, custom RAL/NCS colors, or galvanic finishes, ensures both durability and architectural integration. With its 8 Ω impedance, high power handling, and flexible design, the WA216P is a reliable and elegant solution for enhancing any indoor audio system.

## KEY FEATURES

Passive indoor subwoofer with 1 × 130 mm woofer + 1 × 160 mm passive radiator

Power handling: 120 W AES / 240 W continuous

Sensitivity: 84 dB (2.83V/1m and 1W/1m)

Maximum SPL: 117 dB @ 1 m

Frequency response: 41 Hz – 1 kHz (–3 dB)

Extended range: 35 Hz – 1 kHz (–10 dB)

Nominal impedance: 8 Ω

Cabinet options: black painted metal, custom RAL/NCS colors, or galvanic finishes

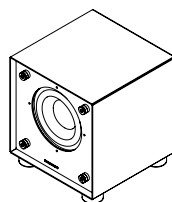
Grille options: lacquered or galvanic metal, brushed stainless steel

Installation: free-standing placement for easy integration

Connectivity: Phoenix connectors, accepts 18 AWG to 11 AWG cables

Weight: 4.74 kg – compact and discreet design

Extended warranty: 3+1+1 years with free registration



NAME INSTALLATION	Subwoofer
Type Installation	Free Standing
Surface Compatibility	
Installation Requirements:	
SINGLE LOUDSPEAKER PERFORMANCE	
AES Power Handling	120 W
Continuous Power Handling ***	240 W
Sensitivity 2,83V / 1m ****	84 dB
Sensitivity 1W/1m ****	84 dB
Calculated Maximum SPL @ 1m*	117 dB
TRANSDUCER	
Type	Subwoofer
Nominal size	1x WF 130mm + 1x PR 160mm
Nominal Impedance	8 $\Omega$
Loudspeaker EQ	Not required, Garvan Preset EQ, Filter and protection available
Recommended High-Pass Filter Protection	40Hz with 48 dB/Oct. Hight pass Filter
Frequency Response (-3 dB)	41 Hz – 1KHz
Frequency Range (-10 dB)	35 Hz – 1KHz
PHYSICAL	
Cabinet / support Material	Standard black painted metal cabinet or custom painted on RAL or NCS scale or galvanic effects
Cover	"Lacquered or galvanic metal Grille. Brushed stainlenss steel Grille.
ENVIRONMENTAL FEATURES	
Environment of Use	Indoor environments
Operating Temperature Range *****	
Connectors	Phoenix connector. Accepts 18 AWG (0.8 mm <sup>2</sup> ) to 11 AWG (4,17 mm <sup>2</sup> ) size wire.
Product Dimensions	
Ceiling Cutout	
Net Weight	
LOGISTICAL DATA	
Packaging dimensions	
Shipping Weight	
Quantity of products per package	1
MAINTENANCE	
Cleaning Method	microfiber cloth
General precautions	do not use harsh cleaning products

INCLUDED ACCESSORIES			
OPTIONAL ACCESSORIES			
Transformer for hight line voltage		TRT052 – 70/100V - 25/37/50W	
Transformer for hight line voltage		TRT054 – 70/100V - 10/15/20W	
Cover installation kit		GAR136	
<b>Cable size/load</b>	<b>8 ohm</b>	<b>4 ohm</b>	<b>2 ohm</b>
2 sq mm.	20m / 65ft.	10m / 32ft	5m / 16ft
2,5 sq mm.	30m / 100ft.	15m / 50ft	7,5m / 25ft
4 sq mm.	60m / 200ft.	30m / 100ft	15m / 50ft
NOTES:			

\* Maximum SPL calculated from sensitivity and power handling specifications, using a signal with crest factor 4 (12dB), exclusive of power compression.

\*\* With dedicated preset

\*\*\* Power on Continuous Program is defined as 3 dB greater than the Nominal rating.

\*\*\*\* average SPL measured from 200 Hz to 1,5 kHz

\*\*\*\*\* With dedicated ignition and maintenance process

### SUBWOOFER CODES

1 Loudspeaker **WA216P**

AES POWER **120 W**  
TYPE **SUBWOOFER**  
NOM. SIZE **1X WF 130mm + 1X PR 160mm**  
NOM. IMP. **8Ω**

