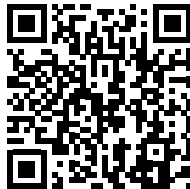
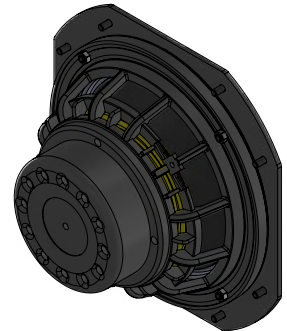
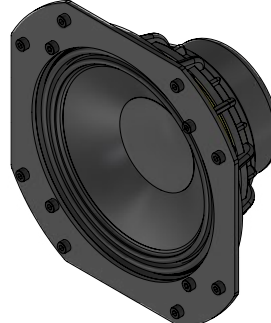




Plasterboard /
Concrete wall



**SCAN OR CLICK TO EXTEND
YOUR GARVAN WARRANTY FOR FREE!**

3 years included, with the option to add
2 extra years at no additional cost.

OVERVIEW DESCRIPTION – UNIQUE DESCRIPTION PRODUCT

6.5" (160 mm) in-wall and in-ceiling subwoofer speaker, 300 W max, with dedicated mounting frame with G-Bass™ system to maximize low-frequency acoustic response, steel speaker frame and masonry and plasterboard installation backbox made of phenolic plywood + steel. This product supports FiloMuro™ wall installation, suitable for plasterboard and masonry walls. The 6.5" (160 mm) woofer speaker features a Neodymium magnet assembly, a treated cellulose cone, and a dual-wave rubber surround that allows very wide cone excursion for greater low-frequency extension. Connection to the amplifier is via spring-loaded terminals that can accommodate cables up to AWG11 gauge. The aesthetic cover is securely fastened by powerful neodymium magnets. The grille cover can be customized in various materials, including perforated steel that can be painted white or pre-painted according to RAL or NCS codes and even treated with galvanic effects. Fabric covers can also be used, available in a wide choice of textures and colors, as shown in Garvan's sample books.

KEY FEATURES

High Power Handling: Delivers up to 300W max power (150W AES), ideal for demanding low-frequency applications.

Aesthetic Covers: Magnetic grille available in perforated steel, galvanic finishes, or acoustic fabrics in a wide color range.

Compact and Versatile: 6.5" (160 mm) subwoofer designed for both in-wall and in-ceiling installations.

Easy Connectivity: Spring-loaded terminals support up to AWG11 (4.17 mm²) cable size for secure and efficient wiring.

G-Bass™ System: Custom mounting frame enhances bass performance by maximizing low-frequency acoustic response.

Premium Materials: Phenolic plywood backbox with steel frame ensures durability and rigidity.

Deep Bass Response: Extended frequency range from 35 Hz to 200 Hz (±3 dB), reaching down to 33 Hz (±10 dB).

Flush Integration: Compatible with FiloMuro™ installation for plasterboard and masonry, ensuring a seamless visual finish.



INSTALLATION NAME	Flush-Mount™ Concrete wall / Plasterboard
Installation Type	In Wall / In Ceiling Speaker, TL Box
Surface Compatibility	Suitable for installation in Plasterboard, wooden panels, modular panel, and similar.
Installation Requirements	Required support thickness: 12,5-25mm_x0003_ Minimum required wall thickness: 130mm
SINGLE LOUDSPEAKER PERFORMANCE	
AES Power Handling	150W
Continuous Power Handling ***	300W
Sensitivity 2,83V / 1m ****	91dB
Sensitivity 1W/1m ****	91dB
Calculated Maximum SPL @ 1m*	125dB
TRANSDUCER	
Type	Subwoofer
Nominal size	1x WF 160mm
Nominal Impedance	8Ω
Loudspeaker EQ	Not required, Garvan Preset EQ, Filter and protection available
Recommended High-Pass Filter Protection	35 Hz with 48 dB/Oct. High pass Filter
Frequency Response (-3 dB)	35 Hz – 200 Hz **
Frequency Range (-10 dB)	33 Hz – 200 Hz **
Nominal Coverage Angle (1 KHz - 4 kHz)	
Nominal Coverage (1 KHz – 10 kHz)	
PHYSICAL	
Frame Material	"zinc-plated metal + phenolic multilayer wood"
Speaker support Material	Lacquered or galvanic metal support
Cover	Lacquered or galvanic metal Grille/ Brushed stainless steel Grille / Fabric covered frame.
ENVIRONMENTAL FEATURES	
Environment of Use	Indoor environments
Operating Temperature Range *****	
environmental protection.	

Connectors				Push connector, mounted on crossover and on speaker coax. Accepts 18 AWG (0.8 mm2) to 11 AWG (4,17 mm2) size wire.
Maximum Ceiling Thickness				
Product Dimensions				
Ceiling Cutout				
Net Weight, Frame				
Net Weight, Loudspeaker				
Net Weight, Cover				
LOGISTICAL DATA				
Packaging dimensions				
Shipping Weight				
Quantity of products per package				1 to 2 based on logistics optimization per shipment
MAINTENANCE				
Cleaning Method				microfiber cloth
General precautions				do not use harsh cleaning products
INCLUDED ACCESSORIES				
				Jig set
OPTIONAL ACCESSORIES				
Transformer for hight line voltage				TRT052 - 70/100V - 25/37/50W
Transformer for hight line voltage				TRT054 - 70/100V - 10/15/20W
Cover installation kit				GAR136
Sound-absorbing material kit for installation				
Cable size/load	8 ohm	4 ohm	2 ohm	
2 sq mm.	20m / 65ft.	10m / 32ft	5m / 16ft	
2,5 sq mm.	30m / 100ft.	15m / 50ft	7,5m / 25ft	
4 sq mm.	60m / 200ft.	30m / 100ft	15m / 50ft	

NOTES:

* Maximum SPL calculated from sensitivity and power handling specifications, using a signal with crest factor 4 (12dB), exclusive of power compression.

** With dedicated preset

*** Power on Continuous Program is defined as 3 dB greater than the Nominal rating.

**** average SPL measured from 200 Hz to 1,5 kHz

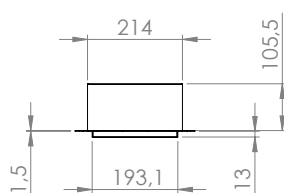
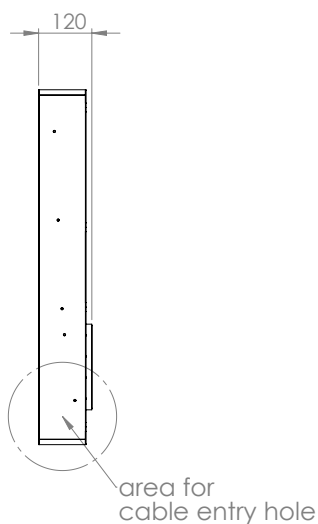
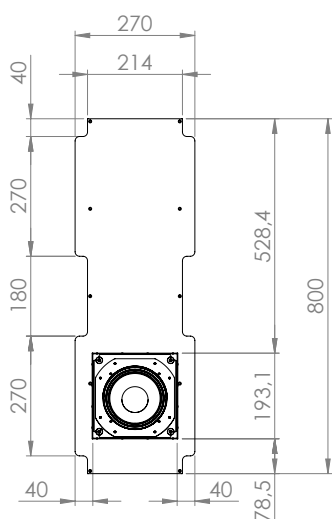
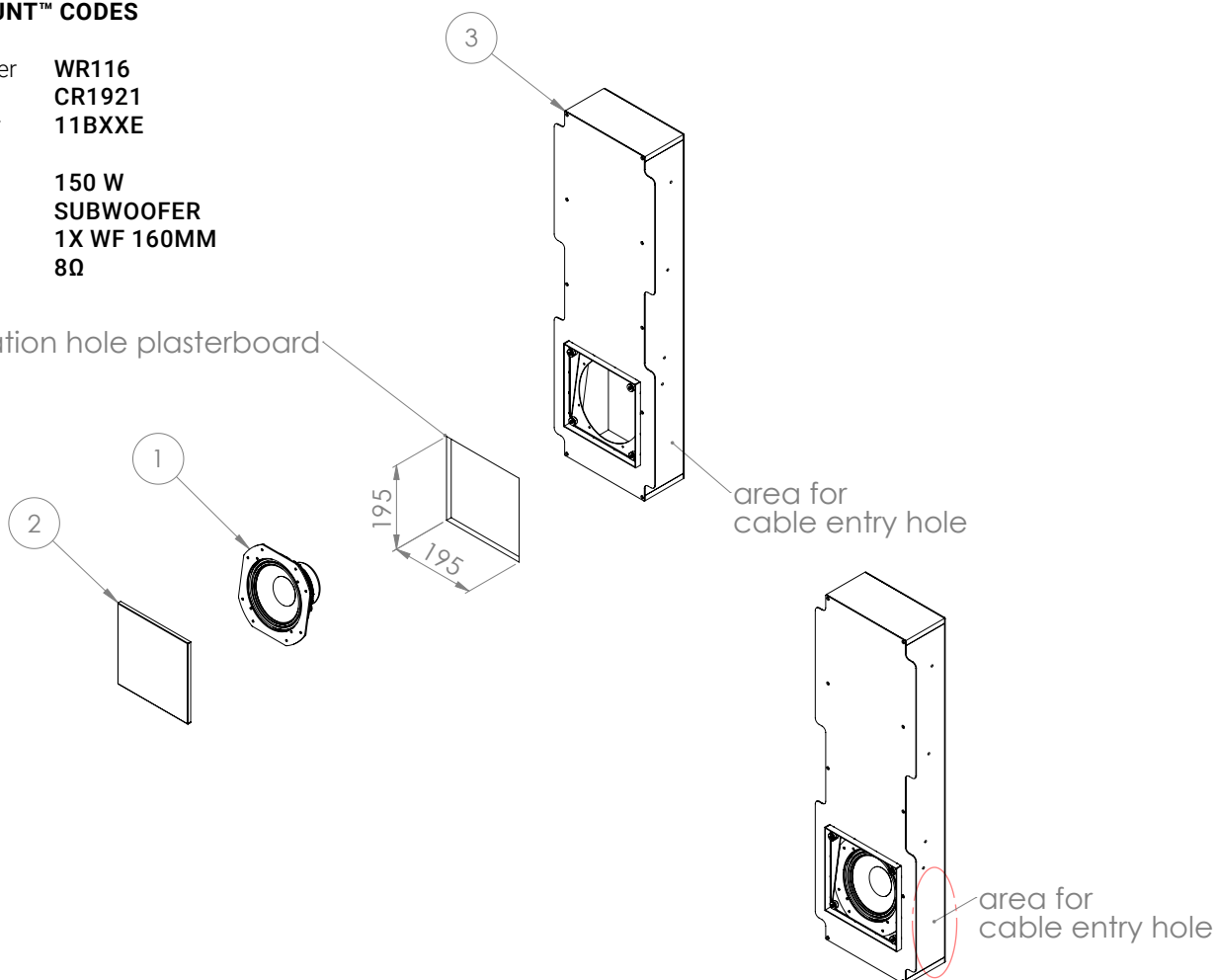
***** With dedicated ignition and maintenance process

FLUSH-MOUNT™ CODES

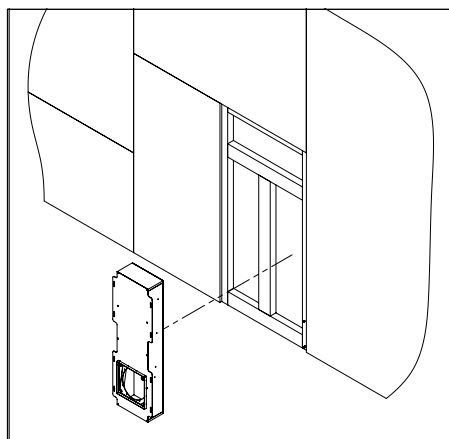
1 Loudspeaker **WR116**
2 Frame **CR1921**
3 Front cover **11BXXE**

AES POWER **150 W**
TYPE **SUBWOOFER**
NOM. SIZE **1X WF 160MM**
NOM. IMP. **8Ω**

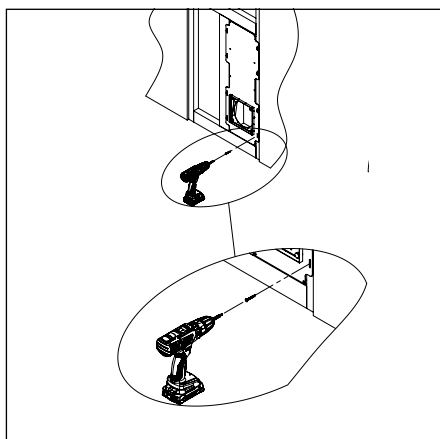
Installation hole plasterboard



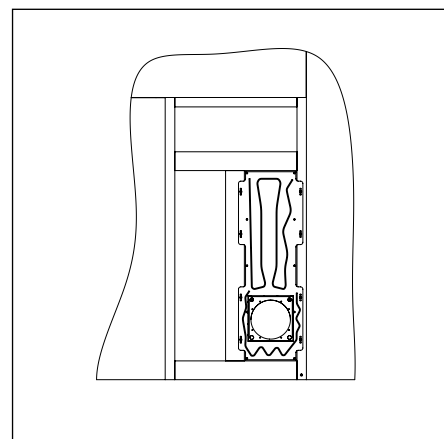
INST. INSTRUCTIONS **WR116 / CR1921 Flush-Mount™ Plasterboard**



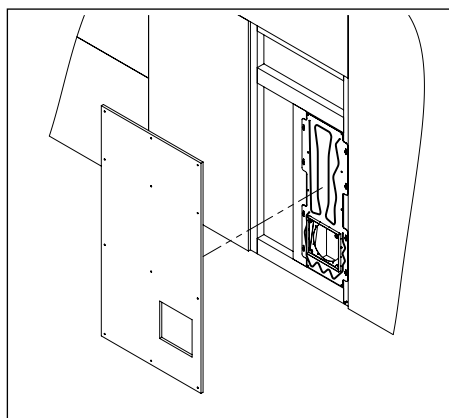
1 Jig set



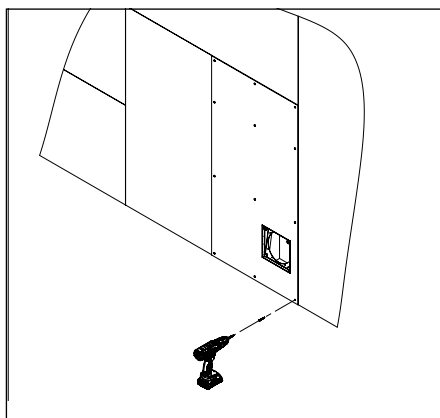
2



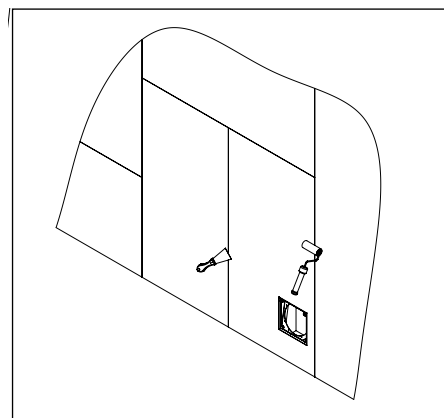
3



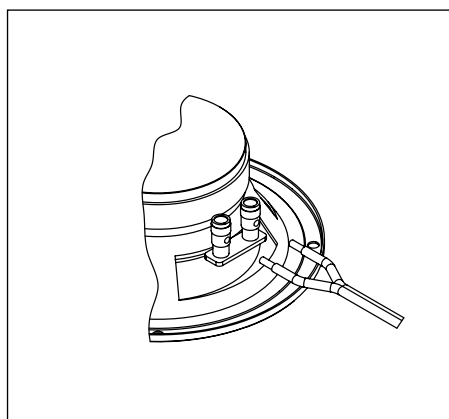
4



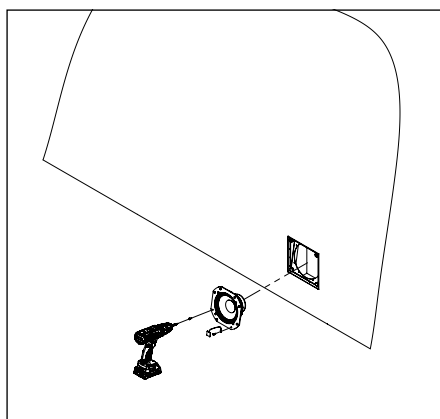
5



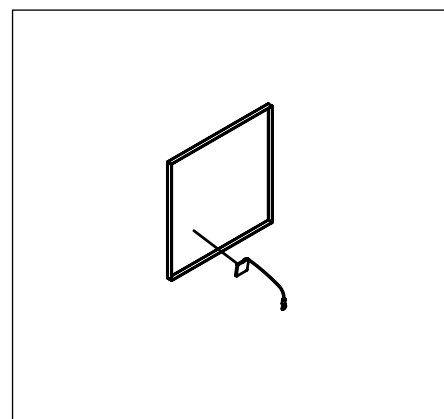
6



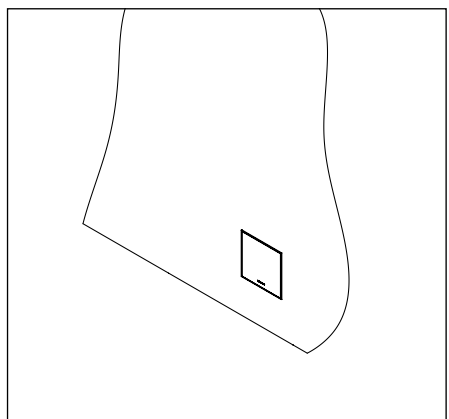
7



8



9



10

